

Recombinant Human NLRC4 Protein, GST-Tagged

Cat. No. NLRC4-1317H Lot. No. (See product label)

SPECIFICATION

Product Overview	Human CARD12 partial ORF (AAH31555, 531 a.a. - 630 a.a.) recombinant protein with GST-tag at N-terminal.
Species	Human
Source	Wheat Germ
Description	This gene encodes a member of the caspase recruitment domain-containing NLR family. Family members play essential roles in innate immune response to a wide range of pathogenic organisms, tissue damage and other cellular stresses. Mutations in this gene result in autoinflammation with infantile enterocolitis. Alternative splicing results in multiple transcript variants. [provided by RefSeq, Oct 2014]
Molecular Mass	36.63 kDa
AA Sequence	QESLQSVKNTTEQEILKAININSFVECGIHLYQESTSKSALSQEFEAFFQGKSLYINSG NIPDYLFDFFEHLPNCASALDFIKLDFYGGAMASWEKAAED
Applications	Enzyme-linked Immunoabsorbent Assay Western Blot (Recombinant protein) Antibody Production Protein Array
Storage	Store at -80 centigrade. Aliquot to avoid repeated freezing and thawing.

 Tel: 1-631-559-9269 1-516-512-3133

 Email: info@creative-biomart.com  Fax: 1-631-938-8127

 45-1 Ramsey Road, Shirley, NY 11967, USA

Storage Buffer 50 mM Tris-HCl, 10 mM reduced Glutathione, pH=8.0 in the elution buffer.

GENE INFORMATION

Gene Name NLRC4 NLR family, CARD domain containing 4 [Homo sapiens]

Official Symbol NLRC4

Synonyms

NLRC4; NLR family, CARD domain containing 4; CARD12, caspase recruitment domain family, member 12; NLR family CARD domain-containing protein 4; CLAN; CLAN1; CLANA; CLANB; CLANC; CLAND; CLR2.1; ipaf; NOD like receptor C4; nucleotide binding oligomerization domain; leucine rich repeat and CARD domain containing 4; NOD-like receptor C4; ICE-protease activating factor; ice protease-activating factor; CARD, LRR, and NACHT-containing protein; caspase recruitment domain family, member 12; caspase recruitment domain-containing protein 12; nucleotide-binding oligomerization domain, leucine rich repeat and CARD domain containing 4; IPAF; CARD12;

Gene ID 58484

mRNA Refseq NM_001199138

Protein Refseq NP_001186067

MIM 606831

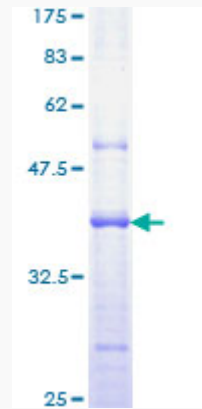
UniProt ID Q9NPP4

 Tel: 1-631-559-9269 1-516-512-3133

 Email: info@creative-biomart.com  Fax: 1-631-938-8127

 45-1 Ramsey Road, Shirley, NY 11967, USA

**Quality Control
Testing**



12.5% SDS-PAGE Stained with Coomassie Blue.

 Tel: 1-631-559-9269 1-516-512-3133

 Email: info@creative-biomart.com  Fax: 1-631-938-8127

 45-1 Ramsey Road, Shirley, NY 11967, USA