

Recombinant Human NLRP1 Protein, Myc/DDK-tagged, C13 and N15-labeled

Cat. No. NLRP1-4076H Lot. No. (See product label)

SPECIFICATION

Product Overview

NLRP1 MS Standard C13 and N15-labeled recombinant protein (NP_127497) with a C-terminal MYC/DDK tag, was expressed in HEK293 cells.

Species

Human

Source

HEK293

Description

This gene encodes a member of the Ced-4 family of apoptosis proteins. Ced-family members contain a caspase recruitment domain (CARD) and are known to be key mediators of programmed cell death. The encoded protein contains a distinct N-terminal pyrin-like motif, which is possibly involved in protein-protein interactions. This protein interacts strongly with caspase 2 and weakly with caspase 9. Overexpression of this gene was demonstrated to induce apoptosis in cells. Multiple alternatively spliced transcript variants encoding distinct isoforms have been found for this gene, but the biological validity of some variants has not been determined.

Molecular Mass

165.7 kDa

AA Sequence

MAGGAWGRLACYLEFLKKEELKEFQLLLANKAHSRSSSGETPAQPEKTSGMEVASY
LVAQYGEQRAWDLALHTWEQMGLRSLCAQAQEGAGHSPSPFPYSPSEPHLGSPSQ
PTSTAVLMPWIHELPAGCTQGSERRVLRQLPDTSGRRWREISASLLYQALPSSPDH
ESPSQESPNAPTSTAVLGSWGSPPQPPLAPREQEAPGTQWPLDETSGIYYTEIRER
EREKSEKGRPPWAAVVGTPPQAHTSLQPHHHPWEPSVRESLCSTWPWKNEFDNQ

 Tel: 1-631-559-9269 1-516-512-3133

 Email: info@creative-biomart.com  Fax: 1-631-938-8127

 45-1 Ramsey Road, Shirley, NY 11967, USA

KFTQLLLLQRPHPRSQDPLVKRSWPDYVEENRGLHIEIRDLFPGPLDTQEPRIVILQG
 AAGIGKSTLARQVKEAWGRGQLYGDRFQHVYFSCRELAQSKVVS LAELIGKDGT
 TPAPIRQILSRPERLLFILDGVDEPGWVLQEPSSSELCLHWSQPQPADALLGSLLGKTI
 LPEASFLITARTTALQNLIPSLEQARWVEVLGFSESSRKEYFYRYFTDERQAIRAFRL
 VKSNKELWALCLVPWVSWLACTCLMQQMKRKEKLTLSKTTTTLCLHYLAQALQAQ
 PLGPQLRDLCSLAAEGIWQKKT LFSRDDLRKHGLDGAISTFLKMGILQEHPILSYSF
 IHLCFQEFFAAMS YVLEDEKGRGKHSNCIIDLKLEAYGIHGLFGASTTRFLLGLLSD
 EGEREMENIFHCRLSQGRNLMQWVPSLQLLLQPHSLES LHCLYETRNTFLTQVMA
 HFEEMGMCVETDMELLVCTFCIKFSRHVKKLQ LIEGRQHRSTWSPTMVVLFWRWPV
 TDAYWQILFSVLKVTRNLKELDLSGNSLSHSAVKSLCKTLRRPRCLLET LRLAGCGLT
 AEDCKDLAFGLRANQTLTELDLSFNVLT DAKHLCQRLRQPSCKLQRLQLVSCGL
 TSDCCQDLASVLSASPSLKELDLQQNNLDDVGVRLLC EGLRHPACKLIRLGLDQTTL
 SDEM RQELRALEQEKPQLLIFSRRKPSVMTPEGLDTGEMSNSTSSLKRQRLGSER
 AASHVAQANLKLDDVSKIFPIAIEIAEESSEVVPVELLCVPSPASQGD LHTKPLGTTD
 DFWGPTGPVATEVVDKEKNLYRVHFPVAGSYRWPNTGLCFVMREAVTVEIEFCVW
 DQFLGEINPQHSWMVAGPLLDIKAEPGAVEAVHLP HFVALQGGHVDTSLFQMAHFK
 EEGMLLEKPARVELHHIVLENPSFSPLGVLLKMIHNALRFIPVTSV VLLYHRVHPEEVT
 FHLYLIPSDCSIRKAIDDLKMFQFVRIHKPPPLTPLYMGCRYTVSGSGSGMLEILPKE
 LELCYRSPGEDQLFSEFYVGHLSGIRLQVKDKKDETLVWEALVKPGDLMPATT LIP
 PARIAVPSPLDAPQLLHFVDQYREQLIARVTSVEVVL DKLHGQVLSQEYQYERVLAEN
 TRPSQMRKLFSLSQSWDRKCKDGLYQALKETHPHLIMELWEKGSKKGLLPLSSTRT
 RPLEQKLISEEDLAANDILDYKDDDDKV

Purity > 80% as determined by SDS-PAGE and Coomassie blue staining

Stability Stable for 3 months from receipt of products under proper storage and handling conditions.

Storage Store at -80 centigrade. Avoid repeated freeze-thaw cycles.

 Tel: 1-631-559-9269 1-516-512-3133

 Email: info@creative-biomart.com  Fax: 1-631-938-8127

 45-1 Ramsey Road, Shirley, NY 11967, USA

Concentration 50 µg/mL as determined by BCA

Storage Buffer 100 mM glycine, 25 mM Tris-HCl, pH 7.3.

GENE INFORMATION

Gene Name [NLRP1 NLR family pyrin domain containing 1 \[Homo sapiens \(human\) \]](#)

Official Symbol [NLRP1](#)

Synonyms

NLRP1; NLR family, pyrin domain containing 1; NACHT, leucine rich repeat and PYD (pyrin domain) containing 1, NALP1; NACHT, LRR and PYD domains-containing protein 1; CARD7; CLR17.1; DEFCAP; DKFZp586O1822; KIAA0926; NAC; nucleotide binding oligomerization domain; leucine rich repeat and pyrin domain containing 1; caspase recruitment domain protein 7; NACHT, LRR and PYD containing protein 1; NACHT, leucine rich repeat and PYD containing 1; caspase recruitment domain-containing protein 7; nucleotide-binding domain and caspase recruitment domain; death effector filament-forming Ced-4-like apoptosis protein; NACHT, leucine rich repeat and PYD (pyrin domain) containing 1; nucleotide-binding oligomerization domain, leucine rich repeat and pyrin domain containing 1; NALP1; SLEV1; PP1044; VAMAS1; DEFCAP-L/S;

Gene ID [22861](#)

mRNA Refseq [NM_033004](#)

Protein Refseq [NP_127497](#)

MIM [606636](#)

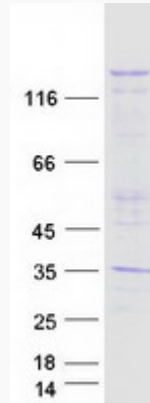
UniProt ID [Q9C000](#)

 Tel: 1-631-559-9269 1-516-512-3133

 Email: info@creative-biomart.com  Fax: 1-631-938-8127

 45-1 Ramsey Road, Shirley, NY 11967, USA

SDS-PAGE



 Tel: 1-631-559-9269 1-516-512-3133

 Email: info@creative-biomart.com  Fax: 1-631-938-8127

 45-1 Ramsey Road, Shirley, NY 11967, USA