

Recombinant Full Length Human NLRP10 Protein, C-Flag-tagged

Cat. No. NLRP10-1119HFL **Lot. No.** (See product label)

SPECIFICATION

Product Overview	Recombinant Full Length Human NLRP10 Protein, fused to Flag-tag at C-terminus, was expressed in Mammalian cells.
Species	Human
Source	Mammalian Cells
Description	Members of the NALP protein family typically contain a NACHT domain, a NACHT-associated domain (NAD), a C-terminal leucine-rich repeat (LRR) region, and an N-terminal pyrin domain (PYD). The protein encoded by this gene belongs to the NALP protein family despite lacking the LRR region. This protein likely plays a regulatory role in the innate immune system. The protein belongs to the signal-induced multiprotein complex, the inflammasome, that activates the pro-inflammatory caspases, caspase-1 and caspase-5. Other experiments indicate that this gene acts as a multifunctional negative regulator of inflammation and apoptosis.
Form	25 mM Tris HCl, pH 7.3, 100 mM glycine, 10% glycerol.
Molecular Mass	74.9 kDa
AA Sequence	MAMAKARKPREALLWALSDLEENDFKKLFYLRDMLSEGQPPLARGELEGLIPVDL AELLISKYGEKEA VKVVLKGLKVMNLELVDQLSHICLHDYREVYREHVRCLEEWQE AGVNGRYNQVLLVAKPSSSESPELAC PFPEQELESVTVEALFDSGEKPSLAPSLVV LQGSAGTGKTTLARKMVLWDWATGTLYPGRFDYVFYVSCKE VLLLESKLEQLLFWC

 Tel: 1-631-559-9269 1-516-512-3133

 Email: info@creative-biomart.com  Fax: 1-631-938-8127

 45-1 Ramsey Road, Shirley, NY 11967, USA

CGDNQAPVTEILRQPERLLFILDGFDELQRPFEELKLRGLSPKESLLHLLIRR HTLP
 TCSLLITRPLALRNLEPLLQARHVHILGFSEERARYFSSYFTDEKQADRAFDIVQK
 NDILYKA CQVPGICWVCSWLQGQMERGKVVLETPRNSTDIFMAYVSTFLPPDDD
 GGCELSRHRVLRSLCSLAAEG IQHQRFLFEEAELRKHNLDPRLAAFLSSNDYQL
 GLAIKKFYFRHISFQDFHAMSylvkedQsrlgke SRREVQRLLLEVKEQEGNDEM
 TLTMQFLLDISKKDSFSNLELKFCFRISPCLAQDLKHFKEQMESMKHNRT WDLEFSL
 YEAKIKNLVKGIQMNNVSFKIKHSNEKKSQSQNLFSVKSSLSHGPKKEEQKCPSVHGQ
 KEGKDN
 IAGTQKEASTGKGRGTEETPKNTYITRTRPLEQKLISEEDLAANDILDYKDDDDKV

Purity > 80% as determined by SDS-PAGE and Coomassie blue staining.

Stability Stable for 12 months from the date of receipt of the product under proper storage and handling conditions. Avoid repeated freeze-thaw cycles.

Storage Store at -80 centigrade.

Concentration >50 ug/mL as determined by microplate BCA method.

Preparation Recombinant protein was captured through anti-DDK affinity column followed by conventional chromatography steps.

Full Length Full L.

GENE INFORMATION

Gene Name NLRP10 NLR family pyrin domain containing 10 [Homo sapiens (human)]

Official Symbol NLRP10

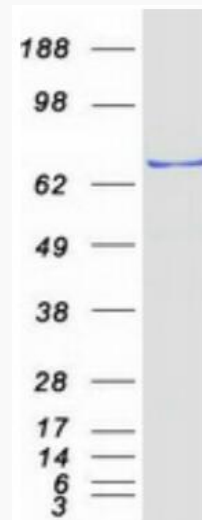
Synonyms NOD8; PAN5; PYNOD; NALP10; CLR11.1

 Tel: 1-631-559-9269 1-516-512-3133

 Email: info@creative-biomart.com  Fax: 1-631-938-8127

 45-1 Ramsey Road, Shirley, NY 11967, USA

Gene ID	338322
mRNA Refseq	NM_176821.4
Protein Refseq	NP_789791.1
MIM	609662
UniProt ID	Q86W26



Coomassie blue staining of purified NLRP10 protein.

 Tel: 1-631-559-9269 1-516-512-3133

 Email: info@creative-biomart.com  Fax: 1-631-938-8127

 45-1 Ramsey Road, Shirley, NY 11967, USA