

Recombinant Human NLRP3 protein, His-tagged

Cat. No. NLRP3-1422H Lot. No. (See product label)

SPECIFICATION

Product Overview	Recombinant Human NLRP3 protein(Q96P20)(29-231aa), fused to N-terminal His tag, was expressed in E. coli.
Species	Human
Source	E.coli
ProteinLength	29-231aa
Form	If the delivery form is liquid, the default storage buffer is Tris/PBS-based buffer, 5%-50% glycerol. If the delivery form is lyophilized powder, the buffer before lyophilization is Tris/PBS-based buffer, 6% Trehalose, pH 8.0.
Molecular Mass	27.7 kDa
Purity	Greater than 90% as determined by SDS-PAGE.
Storage	Store at -20°C/-80°C upon receipt, aliquoting is necessary for mutiple use. Avoid repeated freeze-thaw cycles.
Reconstitution	It is recommended that sterile water be added to the vial to prepare a stock solution of 0.2 ug/ul. Centrifuge the vial at 4°C before opening to recover the entire contents.

GENE INFORMATION

 Tel: 1-631-559-9269 1-516-512-3133

 Email: info@creative-biomart.com  Fax: 1-631-938-8127

 45-1 Ramsey Road, Shirley, NY 11967, USA

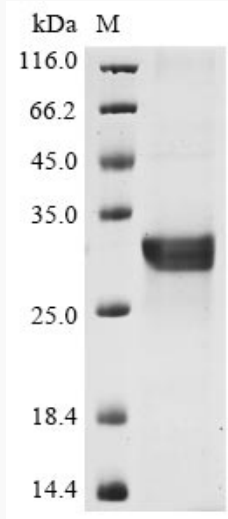
Gene Name	NLRP3 NLR family, pyrin domain containing 3 [Homo sapiens]
Official Symbol	NLRP3
Synonyms	NLRP3; NLR family, pyrin domain containing 3; C1orf7, CIAS1, cold autoinflammatory syndrome 1; NACHT, LRR and PYD domains-containing protein 3; AGTAVPRL; All; AVP; CLR1.1; Cryopyrin; FCAS; FCU; MWS; NALP3; nucleotide binding oligomerization domain; leucine rich repeat and pyrin domain containing 3; PYPAF1; cryopyrin; caterpillar protein 1.1; PYRIN-containing APAF1-like protein 1; NACHT, LRR and PYD containing protein 3; cold autoinflammatory syndrome 1 protein; NACHT domain-, leucine-rich repeat-, and PYD-containing protein 3; nucleotide-binding oligomerization domain, leucine rich repeat and pyrin domain containing 3; CIAS1; C1orf7; FLJ95925;
Gene ID	114548
mRNA Refseq	NM_001079821
Protein Refseq	NP_001073289
MIM	606416
UniProt ID	Q96P20

 Tel: 1-631-559-9269 1-516-512-3133

 Email: info@creative-biomart.com  Fax: 1-631-938-8127

 45-1 Ramsey Road, Shirley, NY 11967, USA

SDS-PAGE



 Tel: 1-631-559-9269 1-516-512-3133

 Email: info@creative-biomart.com  Fax: 1-631-938-8127

 45-1 Ramsey Road, Shirley, NY 11967, USA