

## Recombinant Human NLRP3 Protein (Met1-Arg157), N-His tagged

Cat. No. NLRP3-3987H Lot. No. (See product label)

### SPECIFICATION

<b>Product Overview</b>	Recombinant human NLRP3 (Met1-Arg157) fused with the N-His tag was expressed in E. coli.
<b>Species</b>	Human
<b>Source</b>	E.coli
<b>ProteinLength</b>	Met1-Arg157
<b>Form</b>	Lyophilized powder/frozen liquid
<b>Molecular Mass</b>	20.97 kDa
<b>Purity</b>	>90% as determined by SDS-PAGE.
<b>Notes</b>	For research use only.
<b>Storage</b>	Use a manual defrost freezer and avoid repeated freeze thaw cycles. Store at 2 to 8 centigrade for one week. Store at -20 to -80 centigrade for twelve months from the date of receipt.
<b>Storage Buffer</b>	0.01M PBS, pH 7.4, 0.02% NLS
<b>Reconstitution</b>	Reconstitute in sterile water for a stock solution.

 Tel: 1-631-559-9269 1-516-512-3133

 Email: [info@creative-biomart.com](mailto:info@creative-biomart.com)  Fax: 1-631-938-8127

 45-1 Ramsey Road, Shirley, NY 11967, USA

**Shipping** They are shipped out with dry ice/blue ice unless customers require otherwise.

## GENE INFORMATION

**Gene Name** [NLRP3 NLR family, pyrin domain containing 3 \[ Homo sapiens \(human\) \]](#)

**Official Symbol** [NLRP3](#)

**Synonyms** NLRP3; NLR family, pyrin domain containing 3; C1orf7, CIAS1, cold autoinflammatory syndrome 1; NACHT, LRR and PYD domains-containing protein 3; AGTAVPRL; All; AVP; CLR1.1; Cryopyrin; FCAS; FCU; MWS; NALP3; nucleotide binding oligomerization domain; leucine rich repeat and pyrin domain containing 3; PYPAF1; cryopyrin; caterpillar protein 1.1; PYRIN-containing APAF1-like protein 1; NACHT, LRR and PYD containing protein 3; cold autoinflammatory syndrome 1 protein; NACHT domain-, leucine-rich repeat-, and PYD-containing protein 3; nucleotide-binding oligomerization domain, leucine rich repeat and pyrin domain containing 3; CIAS1; C1orf7; FLJ95925;

**Gene ID** [114548](#)

**mRNA Refseq** [NM\\_001079821](#)

**Protein Refseq** [NP\\_001073289](#)

**MIM** [606416](#)

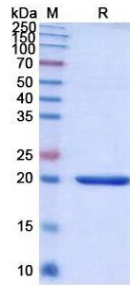
**UniProt ID** [Q96P20](#)

 Tel: 1-631-559-9269 1-516-512-3133

 Email: [info@creative-biomart.com](mailto:info@creative-biomart.com)  Fax: 1-631-938-8127

 45-1 Ramsey Road, Shirley, NY 11967, USA

**SDS-PAGE**



 Tel: 1-631-559-9269 1-516-512-3133

 Email: [info@creative-biomart.com](mailto:info@creative-biomart.com)  Fax: 1-631-938-8127

 45-1 Ramsey Road, Shirley, NY 11967, USA