

## Recombinant Human NLRP6 protein, His-tagged

Cat. No. NLRP6-6453H Lot. No. (See product label)

### SPECIFICATION

|                         |   |
|-------------------------|---|
| <b>Product Overview</b> | Recombinant Human NLRP6 protein(P59044)(1-892aa), fused with C-terminal His tag, was expressed in Insect cells.   |
| <b>Species</b>          | Human   |
| <b>Source</b>           | Insect cells  |
| <b>ProteinLength</b>    | 1-892aa   |
| <b>Tag</b>              | C-His   |
| <b>Form</b>             | If the delivery form is liquid, the default storage buffer is Tris/PBS-based buffer, 5%-50% glycerol. If the delivery form is lyophilized powder, the buffer before lyophilization is Tris/PBS-based buffer, 6% Trehalose, pH 8.0.                |
| <b>Molecular Mass</b>   | 101.6 kDa   |
| <b>Purity</b>           | Greater than 85% as determined by SDS-PAGE.   |
| <b>Storage</b>          | Store at -20°C/-80°C upon receipt, aliquoting is necessary for mutiple use. Avoid repeated freeze-thaw cycles.  |
| <b>Reconstitution</b>   | We recommend that this vial be briefly centrifuged prior to opening to bring the contents to the bottom. Please reconstitute protein in deionized sterile water to a concentration of 0.1-1.0 mg/mL. We recommend to add 5-50% of glycerol (final |

 Tel: 1-631-559-9269 1-516-512-3133

 Email: [info@creative-biomart.com](mailto:info@creative-biomart.com)  Fax: 1-631-938-8127

 45-1 Ramsey Road, Shirley, NY 11967, USA

concentration) and aliquot for long-term storage at -20°C/-80°C.

**AA Sequence**

MDQPEAPCSSTGPRLAVARELLLAALLEELSQEQLKRFRHKLRDVGPDGRSIPWGRL  
 ERADAVDLAEQLAQFYGPEPALEVARKTLKRADARDVAAQLQERRLQRLGLGSGTL  
 LSVSEYKKKYREHVLQLHARVKERNARSVKITKRFTKLLIAPESAAPEEAMGPAEEPE  
 PGRARRSDTHTFNRLFRDEEGRRPLTVVLQGPAGIGKTMAAKKILYDWAAGKLYQ  
 GQVDFAFFMPCGELLERPGTRSLADLILDQCPDRGAPVPQMLAQQRLLFILDGAD  
 ELPALGGPEAAPCTDPFEAASGARVLGGLLSKALLPTALLLVTTAAAAPGRLQGRLC  
 SPQCAEVRGFSDKDKKKYFYKYFRDERRAERAYRFVKENETLFALCFVFPVCWIVC  
 TVLRQQLELGRDLSRTSKTTTTSVYLLFITSVLSSAPVADGPRLQGDLRNLCLAREG  
 VLGRRQAFAEKELEQLELRGSKVQTLFLSKKELPGVLETEVITYQFIDQSFQEFLAALS  
 YLLEDGGVPRTAAGGVGTLLRGDAQPHSHLVLTTRFLFGLLSAERMMDIERHFHFCM  
 VSERVKQEALRWVQGGQGGCPGVAPEVTEGAKGLEDTEEPEEEEEEGEENYPLEL  
 LYCLYETQEDAFVRQALCRFPELALQRVRFRCRMDVAVLSYCVRCCPAGQALRLISC  
 RLVAAQEKKKKSLGKRLQASLGGGSSSQGTTKQLPASLLHPLFQAMTDPLCHLSSL  
 TLSHCKLPDAVCRDLSEALRAAPALTELGLLHNRLSEAGLRMLSEGLAWPQCRVQT  
 VRVQLPDPQRGLQYLVGMLRQSPALTTLDLSGCQLPAPMVTYLCAVLQHQGCGLQ  
 TLSLASVELSEQSLQELQAVKRAKPDLVITHPALDGHPQPPKELISTF

**GENE INFORMATION**

**Gene Name** NLRP6 NLR family, pyrin domain containing 6 [ Homo sapiens ]

**Official Symbol** NLRP6

**Synonyms** NLRP6; NLR family, pyrin domain containing 6; NACHT, leucine rich repeat and PYD containing 6 , NALP6; NACHT, LRR and PYD domains-containing protein 6; CLR11.4; nucleotide binding oligomerization domain; leucine rich repeat and pyrin domain containing 6; PAN3; PYPAF5; angiotensin II/vasopressin receptor; PYRIN-containing APAF1-like protein 5; NACHT, LRR and PYD containing protein 6;

 Tel: 1-631-559-9269 1-516-512-3133

 Email: [info@creative-biomart.com](mailto:info@creative-biomart.com)  Fax: 1-631-938-8127

 45-1 Ramsey Road, Shirley, NY 11967, USA

NACHT, leucine rich repeat and PYD containing 6; nucleotide-binding oligomerization domain, leucine rich repeat and pyrin domain containing 6; NALP6;

**Gene ID** 171389

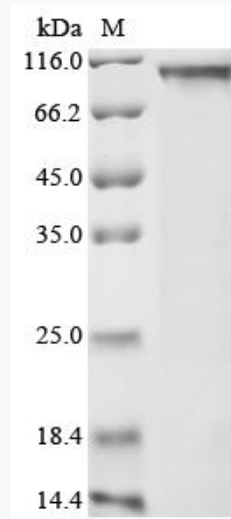
**mRNA Refseq** NM\_138329

**Protein Refseq** NP\_612202

**MIM** 609650

**UniProt ID** P59044

**SDS-PAGE**



 Tel: 1-631-559-9269 1-516-512-3133

 Email: [info@creative-biomart.com](mailto:info@creative-biomart.com)  Fax: 1-631-938-8127

 45-1 Ramsey Road, Shirley, NY 11967, USA