

Recombinant Human NME1 protein, His-tagged

Cat. No. NME1-4021H Lot. No. (See product label)

SPECIFICATION

Product Overview	Recombinant Human NME1 protein(P15531-2)(192aa), fused with N-terminal His tag, was expressed in E. coli.
Species	Human
Source	E.coli
Protein Length	192aa(including fusion tag)
Tag	N-His
Form	20mM Tris.Cl, 100mM NaCl, 0.4M Urea, 50% Glycerol, pH8.0.
Molecular Mass	21.6kDa(including fusion tag)
Storage	Store at -80°C and avoid repeated freeze-thaw cycles.
Reconstitution	It is recommended that sterile water be added to the vial to prepare a stock solution of 0.2 ug/ul. Centrifuge the vial at 4°C before opening to recover the entire contents.

GENE INFORMATION

Gene Name	NME1 non-metastatic cells 1, protein (NM23A) expressed in [Homo sapiens]
Official Symbol	NME1

 Tel: 1-631-559-9269 1-516-512-3133

 Email: info@creative-biomart.com  Fax: 1-631-938-8127

 45-1 Ramsey Road, Shirley, NY 11967, USA

Synonyms NME1; non-metastatic cells 1, protein (NM23A) expressed in; nucleoside diphosphate kinase A; NM23; NM23 H1; NDP kinase A; granzyme A-activated DNase; metastasis inhibition factor nm23; tumor metastatic process-associated protein; NB; AWD; NBS; GAAD; NDKA; NDPKA; NDPK-A; NM23-H1;

Gene ID 4830

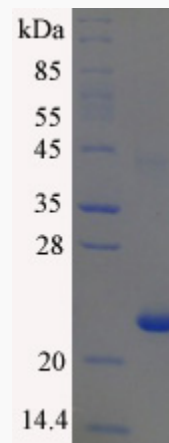
mRNA Refseq [NM_000269](#)

Protein Refseq [NP_000260](#)

MIM 156490

UniProt ID [P15531](#)

SDS-PAGE



 Tel: 1-631-559-9269 1-516-512-3133

 Email: info@creative-biomart.com  Fax: 1-631-938-8127

 45-1 Ramsey Road, Shirley, NY 11967, USA