

Recombinant Human NME1 Protein (Met1-Glu152), N-His tagged

Cat. No. NME1-4709H Lot. No. (See product label)

SPECIFICATION

| | |
|-------------------------|---|
| Product Overview | Recombinant human NME1 (Met1-Glu152) fused with the N-terminal His tag was expressed in E. coli. |
| Species | Human |
| Source | E.coli |
| ProteinLength | Met1-Glu152 |
| Form | Lyophilized powder/frozen liquid |
| Molecular Mass | 16.72 kDa |
| Purity | >90% as determined by SDS-PAGE. |
| Notes | For research use only. |
| Storage | Use a manual defrost freezer and avoid repeated freeze thaw cycles. Store at 2 to 8 centigrade for one week. Store at -20 to -80 centigrade for twelve months from the date of receipt. |
| Storage Buffer | Supplied as solution form in PBS or lyophilized from PBS. |
| Reconstitution | Reconstitute in sterile water for a stock solution. |

 Tel: 1-631-559-9269 1-516-512-3133

 Email: info@creative-biomart.com  Fax: 1-631-938-8127

 45-1 Ramsey Road, Shirley, NY 11967, USA

Shipping They are shipped out with dry ice/blue ice unless customers require otherwise.

GENE INFORMATION

Gene Name NME1 non-metastatic cells 1, protein (NM23A) expressed in [Homo sapiens (human)]

Official Symbol NME1

Synonyms NME1; non-metastatic cells 1, protein (NM23A) expressed in; nucleoside diphosphate kinase A; NM23; NM23 H1; NDP kinase A; granzyme A-activated DNase; metastasis inhibition factor nm23; tumor metastatic process-associated protein; NB; AWD; NBS; GAAD; NDKA; NDPKA; NDPK-A; NM23-H1;

Gene ID 4830

mRNA Refseq NM_000269

Protein Refseq NP_000260

MIM 156490

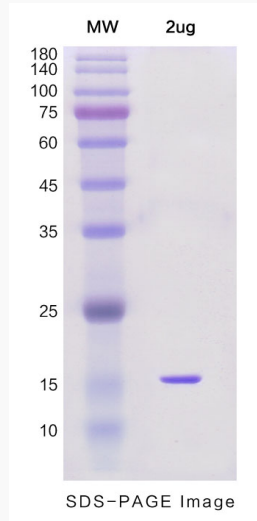
UniProt ID P15531

 Tel: 1-631-559-9269 1-516-512-3133

 Email: info@creative-biomart.com  Fax: 1-631-938-8127

 45-1 Ramsey Road, Shirley, NY 11967, USA

SDS-PAGE



 Tel: 1-631-559-9269 1-516-512-3133

 Email: info@creative-biomart.com  Fax: 1-631-938-8127

 45-1 Ramsey Road, Shirley, NY 11967, USA