

Recombinant Human NME1 protein, GST-tagged

Cat. No. NME1-5191H Lot. No. (See product label)

SPECIFICATION

Product Overview	Recombinant Human NME1 protein(P15531)(2-152aa), fused to N-terminal GST tag, was expressed in E. coli.
Species	Human
Source	E.coli
ProteinLength	2-152aa
Form	If the delivery form is liquid, the default storage buffer is Tris/PBS-based buffer, 5%-50% glycerol. If the delivery form is lyophilized powder, the buffer before lyophilization is Tris/PBS-based buffer, 6% Trehalose, pH 8.0.
Molecular Mass	44 kDa
Purity	Greater than 90% as determined by SDS-PAGE.
Storage	Store at -20°C/-80°C upon receipt, aliquoting is necessary for mutiple use. Avoid repeated freeze-thaw cycles.
Reconstitution	Please reconstitute protein in deionized sterile water to a concentration of 0.1-1.0 mg/mL. We recommend to add 5-50% of glycerol (final concentration) and aliquot for long-term storage at -20°C/-80°C. Our default final concentration of glycerol is 50%.

 Tel: 1-631-559-9269 1-516-512-3133

 Email: info@creative-biomart.com  Fax: 1-631-938-8127

 45-1 Ramsey Road, Shirley, NY 11967, USA

GENE INFORMATION

Gene Name NME1 non-metastatic cells 1, protein (NM23A) expressed in [Homo sapiens]

Official Symbol NME1

Synonyms NME1; non-metastatic cells 1, protein (NM23A) expressed in; nucleoside diphosphate kinase A; NM23; NM23 H1; NDP kinase A; granzyme A-activated DNase; metastasis inhibition factor nm23; tumor metastatic process-associated protein; NB; AWD; NBS; GAAD; NDKA; NDPKA; NDPK-A; NM23-H1;

Gene ID 4830

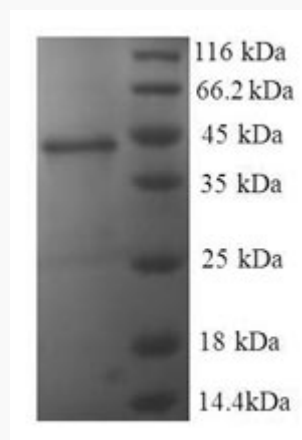
mRNA Refseq NM_000269

Protein Refseq NP_000260

MIM 156490

UniProt ID P15531

SDS-PAGE



 Tel: 1-631-559-9269 1-516-512-3133

 Email: info@creative-biomart.com  Fax: 1-631-938-8127

 45-1 Ramsey Road, Shirley, NY 11967, USA