

## Recombinant Human NME1 protein, His-tagged

Cat. No. NME1-5510H Lot. No. (See product label)

### SPECIFICATION

<b>Product Overview</b>	Recombinant Human NME1 protein(P15531)(167aa), fused with N-terminal His tag, was expressed in E. coli.
<b>Species</b>	Human
<b>Source</b>	E.coli
<b>Protein Length</b>	167aa(including fusion tag)
<b>Tag</b>	N-His
<b>Form</b>	20mM Tris.Cl, 50mM NaCl, 50% Glycerol, pH8.0.
<b>Molecular Mass</b>	19.1kDa(including fusion tag)
<b>Storage</b>	Store at -80°C and avoid repeated freeze-thaw cycles.
<b>Reconstitution</b>	It is recommended that sterile water be added to the vial to prepare a stock solution of 0.2 ug/ul. Centrifuge the vial at 4°C before opening to recover the entire contents.

### GENE INFORMATION

<b>Gene Name</b>	NME1 non-metastatic cells 1, protein (NM23A) expressed in [ Homo sapiens ]
<b>Official Symbol</b>	NME1

 Tel: 1-631-559-9269 1-516-512-3133

 Email: [info@creative-biomart.com](mailto:info@creative-biomart.com)  Fax: 1-631-938-8127

 45-1 Ramsey Road, Shirley, NY 11967, USA

**Synonyms** NME1; non-metastatic cells 1, protein (NM23A) expressed in; nucleoside diphosphate kinase A; NM23; NM23 H1; NDP kinase A; granzyme A-activated DNase; metastasis inhibition factor nm23; tumor metastatic process-associated protein; NB; AWD; NBS; GAAD; NDKA; NDPKA; NDPK-A; NM23-H1;

**Gene ID** 4830

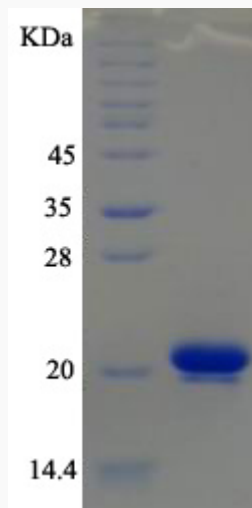
**mRNA Refseq** [NM\\_000269](#)

**Protein Refseq** [NP\\_000260](#)

**MIM** 156490

**UniProt ID** [P15531](#)

**SDS-PAGE**



 Tel: 1-631-559-9269 1-516-512-3133

 Email: [info@creative-biomart.com](mailto:info@creative-biomart.com)  Fax: 1-631-938-8127

 45-1 Ramsey Road, Shirley, NY 11967, USA