

Recombinant Full Length Human NME1 Protein, C-Flag-tagged

Cat. No. NME1-910HFL Lot. No. (See product label)

SPECIFICATION

Product Overview Recombinant Full Length Human NME1 Protein, fused to Flag-tag at C-terminus, was expressed in Mammalian cells.

Species Human

Source Mammalian Cells

Description This gene (NME1) was identified because of its reduced mRNA transcript levels in highly metastatic cells. Nucleoside diphosphate kinase (NDK) exists as a hexamer composed of 'A' (encoded by this gene) and 'B' (encoded by NME2) isoforms. Mutations in this gene have been identified in aggressive neuroblastomas. Two transcript variants encoding different isoforms have been found for this gene. Co-transcription of this gene and the neighboring downstream gene (NME2) generates naturally-occurring transcripts (NME1-NME2), which encodes a fusion protein comprised of sequence sharing identity with each individual gene product.

Form 25 mM Tris HCl, pH 7.3, 100 mM glycine, 10% glycerol.

Molecular Mass 19.5 kDa

AA Sequence
 MVLLSTLGIVFQGEGPPISSCDTGTMANCERTFIAIKPDGVQRGLVGEIIKRFEQKGF
 RLVGLKFMQASE DLLKEHYVDLKDPRFFAGLVKYMHS GPV VAMVWEGLNVVKTGR
 VMLGETNPADSKPGTIRGDFCIQVGRN
 IIHGSDSVESAEKEIGLWFHPEELVDYTSQAQNWYETRTRPLEQKLISEEDLAANDIL
 DYKDDDDKV

 Tel: 1-631-559-9269 1-516-512-3133

 Email: info@creative-biomart.com  Fax: 1-631-938-8127

 45-1 Ramsey Road, Shirley, NY 11967, USA

Purity	> 80% as determined by SDS-PAGE and Coomassie blue staining.
Stability	Stable for 12 months from the date of receipt of the product under proper storage and handling conditions. Avoid repeated freeze-thaw cycles.
Storage	Store at -80 centigrade.
Concentration	>50 ug/mL as determined by microplate BCA method.
Preparation	Recombinant protein was captured through anti-DDK affinity column followed by conventional chromatography steps.
Protein Families	Druggable Genome, Stem cell - Pluripotency
Protein Pathways	Metabolic pathways, Purine metabolism, Pyrimidine metabolism
Full Length	Full L.
GENE INFORMATION	
Gene Name	NME1 NME/NM23 nucleoside diphosphate kinase 1 [Homo sapiens (human)]
Official Symbol	NME1
Synonyms	NB; AWD; NBS; GAAD; NDKA; NM23; NDPKA; NDPK-A; NM23-H1
Gene ID	4830
mRNA Refseq	NM_198175.1
Protein Refseq	NP_937818.1

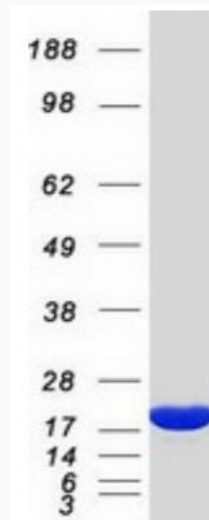
 Tel: 1-631-559-9269 1-516-512-3133

 Email: info@creative-biomart.com  Fax: 1-631-938-8127

 45-1 Ramsey Road, Shirley, NY 11967, USA

MIM 156490

UniProt ID P15531



Coomassie blue staining of purified NME1 protein.

 Tel: 1-631-559-9269 1-516-512-3133

 Email: info@creative-biomart.com  Fax: 1-631-938-8127

 45-1 Ramsey Road, Shirley, NY 11967, USA