

Recombinant Human NME5 Protein, Myc/DDK-tagged, C13 and N15-labeled

Cat. No. NME5-4798H **Lot. No.** (See product label)

SPECIFICATION

Product Overview	NME5 MS Standard C13 and N15-labeled recombinant protein (NP_003542) with a C-terminal MYC/DDK tag, was expressed in HEK293 cells.
Species	Human
Source	HEK293
Description	NME5 (NME/NM23 Family Member 5) is a Protein Coding gene. Diseases associated with NME5 include Nemaline Myopathy 5 and Primary Ciliary Dyskinesia. Among its related pathways are superpathway of pyrimidine deoxyribonucleotides de novo biosynthesis and purine nucleotides de novo biosynthesis. Gene Ontology (GO) annotations related to this gene include nucleoside diphosphate kinase activity. An important paralog of this gene is NME8.
Molecular Mass	24.2 kDa
AA Sequence	MEISMPPPQIYVEKTLAIKPDIVDKKEEIQDIILRSGFTIVQRRKLRLSPEQCSNFYVEK YGKMFFPNLTAYMSSGPLVAMILARHKAISYWLELLGPNNSLVAKETHPDSLRAIYGT DDLRLNALHGSNDFAAAEREIRFMFPEVIVEPIPIGQAAKDYLNLHIMPTLLEGLTELCK QKPADPLIWLADWLLKNNPNKPKLCHHPIVEEPIYTRTRPLEQKLISEEDLAANDILDY KDDDDKV
Purity	> 80% as determined by SDS-PAGE and Coomassie blue staining

 Tel: 1-631-559-9269 1-516-512-3133

 Email: info@creative-biomart.com  Fax: 1-631-938-8127

 45-1 Ramsey Road, Shirley, NY 11967, USA

Stability	Stable for 3 months from receipt of products under proper storage and handling conditions.
Storage	Store at -80 centigrade. Avoid repeated freeze-thaw cycles.
Concentration	50 µg/mL as determined by BCA
Storage Buffer	100 mM glycine, 25 mM Tris-HCl, pH 7.3.
GENE INFORMATION	
Gene Name	NME5 NME/NM23 family member 5 [Homo sapiens (human)]
Official Symbol	NME5
Synonyms	NME5; non-metastatic cells 5, protein expressed in (nucleoside-diphosphate kinase); nucleoside diphosphate kinase homolog 5; nm23 H5; radial spoke 23 homolog (Chlamydomonas); RSPH23; NDK-H 5; IPIA-beta; NDP kinase homolog 5; radial spoke 23 homolog; testis-specific nm23 homolog; inhibitor of p53-induced apoptosis-beta; NM23H5; NM23-H5;
Gene ID	8382
mRNA Refseq	NM_003551
Protein Refseq	NP_003542
MIM	603575
UniProt ID	P56597

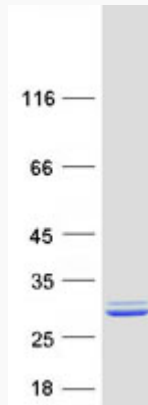
 Tel: 1-631-559-9269 1-516-512-3133

 Email: info@creative-biomart.com  Fax: 1-631-938-8127

 45-1 Ramsey Road, Shirley, NY 11967, USA



SDS-PAGE



Tel: 1-631-559-9269 1-516-512-3133

Email: info@creative-biomart.com Fax: 1-631-938-8127

45-1 Ramsey Road, Shirley, NY 11967, USA