

Recombinant Human NME6 protein, His & T7-tagged

Cat. No. NME6-1456H Lot. No. (See product label)

SPECIFICATION

Product Overview	Recombinant Human NME6 aa. (Ser3~Gly182 (Accession # O75414)) fused with N-terminal His & T7 tag was produced in E. coli cells.
Species	Human
Source	E.coli
ProteinLength	Ser3~Gly182
Description	Nucleoside diphosphate (NDP) kinases (EC 2.7.4.6), such as NME6, are ubiquitous enzymes that catalyze transfer of gamma-phosphates, via a phosphohistidine intermediate, between nucleoside and dioxynucleoside tri- and diphosphates (Mehus et al., 1999 [PubMed 10453732]).
Form	Freeze-dried powder
Molecular Mass	Predicted Molecular Mass: 24.4kDa
Endotoxin	<1.0EU per 1ug (determined by the LAL method)
Purity	>95%
Applications	SDS-PAGE; WB; ELISA; IP.
Stability	The thermal stability is described by the loss rate. The loss rate was determined by

 Tel: 1-631-559-9269 1-516-512-3133

 Email: info@creative-biomart.com  Fax: 1-631-938-8127

 45-1 Ramsey Road, Shirley, NY 11967, USA

accelerated thermal degradation test, that is, incubate the protein at 37°C for 48h, and no obvious degradation and precipitation were observed. The loss rate is less than 5% within the expiration date under appropriate storage condition.

Storage

Avoid repeated freeze/thaw cycles. Store at 2-8°C for one month. Aliquot and store at -80°C for 12 months.

Storage buffer

Supplied as lyophilized form in PBS, pH7.4, containing 5% sucrose, 0.01% sarcosyl.

Reconstitution

Reconstitute in sterile PBS, pH7.2-pH7.4.

Isoelectric Point

8.9

GENE INFORMATION

Gene Name

[NME6 NME/NM23 nucleoside diphosphate kinase 6 \[Homo sapiens \(human\) \]](#)

Official Symbol

[NME6](#)

Synonyms

NME6; NME/NM23 nucleoside diphosphate kinase 6; NDK 6; NM23-H6; IPIA-ALPHA; nucleoside diphosphate kinase 6; NDP kinase 6; inhibitor of p53-induced apoptosis-alpha; non-metastatic cells 6, protein expressed in (nucleoside-diphosphate kinase)

Gene ID

[10201](#)

mRNA Refseq

[NM_001308426.1](#)

Protein Refseq

[NP_001295355.1](#)

UniProt ID

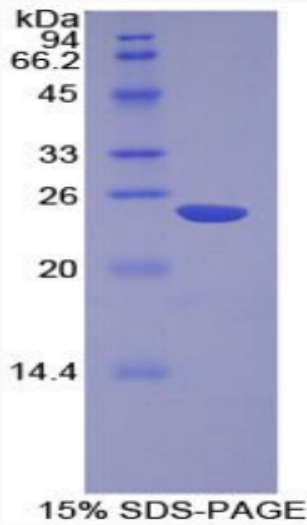
[O75414](#)


 Tel: 1-631-559-9269 1-516-512-3133

 Email: info@creative-biomart.com  Fax: 1-631-938-8127


 45-1 Ramsey Road, Shirley, NY 11967, USA

SDS-PAGE



 Tel: 1-631-559-9269 1-516-512-3133

 Email: info@creative-biomart.com  Fax: 1-631-938-8127

 45-1 Ramsey Road, Shirley, NY 11967, USA