

Recombinant Human NME6 Protein, MYC/DDK-tagged, C13 and N15-labeled

Cat. No. NME6-207H Lot. No. (See product label)

SPECIFICATION

Product Overview	NME6 MS Standard C13 and N15-labeled recombinant protein (NP_005784) with a C-terminal MYC/DDK tag, was expressed in HEK293 cells.
Species	Human
Source	HEK293
Description	Nucleoside diphosphate (NDP) kinases (EC 2.7.4.6), such as NME6, are ubiquitous enzymes that catalyze transfer of gamma-phosphates, via a phosphohistidine intermediate, between nucleoside and dioxynucleoside tri- and diphosphates (Mehus et al., 1999 [PubMed 10453732]). [supplied by OMIM, Jul 2010]
Molecular Mass	22 kDa
AA Sequence	MTQNLGSEMASILRSPQALQLTLALIKPDAVAHPLILEAVHQQILSNKFLIVRMRELLW RKEDCQRFYREHEGRFFYQRLVEFMASGPIRAYILAHKDAIQLWRTLGMGPTRVFRA RHVAPDSIRGSFGLTDTRNTTHGSDSVVSASREIAAFFPDFSEQRWYEEEEEPQLRC GPVCYSPEGGVHYVAGTGGLGPATRTRPLEQKLISEEDLAANDILDYKDDDDKV
Purity	> 80% as determined by SDS-PAGE and Coomassie blue staining
Stability	Stable for 3 months from receipt of products under proper storage and handling conditions.

 Tel: 1-631-559-9269 1-516-512-3133

 Email: info@creative-biomart.com  Fax: 1-631-938-8127

 45-1 Ramsey Road, Shirley, NY 11967, USA

Storage	Store at -80 centigrade. Avoid repeated freeze-thaw cycles.
Concentration	50 µg/mL as determined by BCA
Storage Buffer	100 mM glycine, 25 mM Tris-HCl, pH 7.3.
GENE INFORMATION	
Gene Name	NME6 non-metastatic cells 6, protein expressed in (nucleoside-diphosphate kinase) [Homo sapiens (human)]
Official Symbol	NME6
Synonyms	NME6; non-metastatic cells 6, protein expressed in (nucleoside-diphosphate kinase); nucleoside diphosphate kinase 6; IPIA ALPHA; NM23 H6; NDP kinase 6; inhibitor of p53-induced apoptosis-alpha; NDK 6; NM23-H6; IPIA-ALPHA;
Gene ID	10201
mRNA Refseq	NM_005793
Protein Refseq	NP_005784
MIM	608294
UniProt ID	O75414

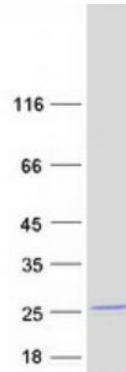
 Tel: 1-631-559-9269 1-516-512-3133

 Email: info@creative-biomart.com  Fax: 1-631-938-8127

 45-1 Ramsey Road, Shirley, NY 11967, USA



SDS-PAGE



Tel: 1-631-559-9269 1-516-512-3133

Email: info@creative-biomart.com Fax: 1-631-938-8127

45-1 Ramsey Road, Shirley, NY 11967, USA