

Recombinant Human NME6 Protein (Leu11-Ala186), N-His tagged

Cat. No. NME6-3871H Lot. No. (See product label)

SPECIFICATION

Product Overview	Recombinant human NME6 (Leu11-Ala186) fused with the N-His tag was expressed in E. coli.
Species	Human
Source	E.coli
ProteinLength	Leu11-Ala186
Form	Lyophilized powder/frozen liquid
Molecular Mass	22.40 kDa
Purity	>90% as determined by SDS-PAGE.
Notes	For research use only.
Storage	Use a manual defrost freezer and avoid repeated freeze thaw cycles. Store at 2 to 8 centigrade for one week. Store at -20 to -80 centigrade for twelve months from the date of receipt.
Storage Buffer	0.01M PBS, pH 7.4, 0.02% NLS
Reconstitution	Reconstitute in sterile water for a stock solution.

 Tel: 1-631-559-9269 1-516-512-3133

 Email: info@creative-biomart.com  Fax: 1-631-938-8127

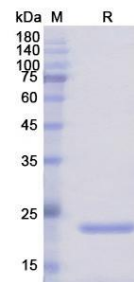
 45-1 Ramsey Road, Shirley, NY 11967, USA

Shipping

They are shipped out with dry ice/blue ice unless customers require otherwise.

GENE INFORMATION

Gene Name	NME6 non-metastatic cells 6, protein expressed in (nucleoside-diphosphate kinase) [Homo sapiens (human)]
Official Symbol	NME6
Synonyms	NME6; non-metastatic cells 6, protein expressed in (nucleoside-diphosphate kinase); nucleoside diphosphate kinase 6; IPIA ALPHA; NM23 H6; NDP kinase 6; inhibitor of p53-induced apoptosis-alpha; NDK 6; NM23-H6; IPIA-ALPHA;
Gene ID	10201
mRNA Refseq	NM_005793
Protein Refseq	NP_005784
MIM	608294
UniProt ID	O75414

SDS-PAGE


 Tel: 1-631-559-9269 1-516-512-3133

 Email: info@creative-biomart.com  Fax: 1-631-938-8127

 45-1 Ramsey Road, Shirley, NY 11967, USA