

## Recombinant Human NMUR2 Protein, GST-tagged

Cat. No. NMUR2-5951H Lot. No. (See product label)

### SPECIFICATION

<b>Product Overview</b>	Human NMUR2 full-length ORF ( AAH16938.1, 1 a.a. - 415 a.a.) recombinant protein with GST-tag at N-terminal.
<b>Species</b>	Human
<b>Source</b>	Wheat Germ
<b>Description</b>	This gene encodes a protein from the G-protein coupled receptor 1 family. This protein is a receptor for neuromedin U, which is a neuropeptide that is widely distributed in the gut and central nervous system. This receptor plays an important role in the regulation of food intake and body weight. [provided by RefSeq]
<b>Molecular Mass</b>	71.39 kDa
<b>AA Sequence</b>	MSGMEKLQNASWIYQQKLEDPFQKHLNSTEEYLAFLCGPRRSHFFLPVSVVYVPIFV VGVIGNVLVCLVILQHQAMKTPTNYLFLSLAVSDLLVLLLGMPLEVYEMWRNYPFLF GPVGCYFKTALFETVCFASILSITTVSVERYVAILHPFRAKLQSTRRRALRILGIVWGF SVLFLSPLNTSIHGKIFHYFPNGSLVPGSATFTVIKPMWIYNFIIQVTSFLFYLLPMTVISV LYYLMALRLKKDKSLEADEGNANIQRPCRKSVNKMLFVLVLFVAICWAPFHIDRLFFS FVEEWSESLAAVFNLVHVVSQVFFYLSSAVNPIIYNLLSRRFQAAFQNVISSFHKQW HSQHDPQLPPAQRNIFLTECHFVELTEDIGPQFPCQSSMHNSHLPTALSSEQMSRT NYQSFHFNKT
<b>Applications</b>	Enzyme-linked Immunoabsorbent Assay Western Blot (Recombinant protein)

 Tel: 1-631-559-9269 1-516-512-3133

 Email: [info@creative-biomart.com](mailto:info@creative-biomart.com)  Fax: 1-631-938-8127

 45-1 Ramsey Road, Shirley, NY 11967, USA



	Antibody Production Protein Array
<b>Notes</b>	Best use within three months from the date of receipt of this protein.
<b>Storage</b>	Store at -80 centigrade. Aliquot to avoid repeated freezing and thawing.
<b>Storage Buffer</b>	50 mM Tris-HCl, 10 mM reduced Glutathione, pH=8.0 in the elution buffer.

## GENE INFORMATION

<b>Gene Name</b>	NMUR2 neuromedin U receptor 2 [ Homo sapiens ]
<b>Official Symbol</b>	NMUR2
<b>Synonyms</b>	NMUR2; neuromedin U receptor 2; NMU2R; neuromedin-U receptor 2; G-protein coupled receptor FM-4; G-protein coupled receptor TGR-1; growth hormone secretagogue receptor family, member 4; FM4; FM-4; TGR1; TGR-1; NMU-R2;
<b>Gene ID</b>	56923
<b>mRNA Refseq</b>	NM_020167
<b>Protein Refseq</b>	NP_064552
<b>MIM</b>	605108
<b>UniProt ID</b>	Q9GZQ4

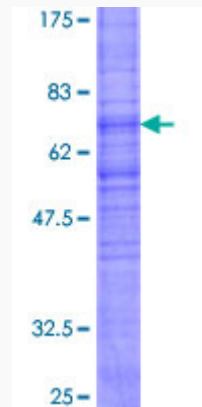
Tel: 1-631-559-9269 1-516-512-3133

Email: [info@creative-biomart.com](mailto:info@creative-biomart.com) Fax: 1-631-938-8127

45-1 Ramsey Road, Shirley, NY 11967, USA

**Quality Control**

**Testing:**



12.5% SDS-PAGE Stained with Coomassie Blue.

 Tel: 1-631-559-9269 1-516-512-3133

 Email: [info@creative-biomart.com](mailto:info@creative-biomart.com)  Fax: 1-631-938-8127

 45-1 Ramsey Road, Shirley, NY 11967, USA