

Recombinant Human NOD1 Protein, GST-Tagged

Cat. No. NOD1-1318H Lot. No. (See product label)

SPECIFICATION

Product Overview	Human NOD1 partial ORF (AAH40339, 91 a.a. - 190 a.a.) recombinant protein with GST-tag at N-terminal.
Species	Human
Source	Wheat Germ
Description	<p>This gene encodes a member of the NOD (nucleotide-binding oligomerization domain) family. This member is a cytosolic protein. It contains an N-terminal caspase recruitment domain (CARD), a centrally located nucleotide-binding domain (NBD), and 10 tandem leucine-rich repeats (LRRs) in its C terminus. The CARD is involved in apoptotic signaling, LRRs participate in protein-protein interactions, and mutations in the NBD may affect the process of oligomerization and subsequent function of the LRR domain. This protein is an intracellular pattern-recognition receptor (PRR) that initiates inflammation in response to a subset of bacteria through the detection of bacterial diaminopimelic acid. Multiple alternatively spliced transcript variants differing in the 5' UTR have been described, but the full-length nature of these variants has not been determined. [provided by RefSeq, Oct 2009]</p>
Molecular Mass	36.63 kDa
AA Sequence	<p>QQLADAYVDLRPWLLEIGFSPSLLTQSKVVVNTDPVSRYTQQLRHHHLGRDSKFVLC YAQKEELLLEEIYMDTIMELVGFSNESLGLNSLACLLDHTTGI</p>
Applications	Enzyme-linked Immunoabsorbent Assay

 Tel: 1-631-559-9269 1-516-512-3133

 Email: info@creative-biomart.com  Fax: 1-631-938-8127

 45-1 Ramsey Road, Shirley, NY 11967, USA

Western Blot (Recombinant protein)
 Antibody Production
 Protein Array

Storage Store at -80 centigrade. Aliquot to avoid repeated freezing and thawing.

Storage Buffer 50 mM Tris-HCl, 10 mM reduced Glutathione, pH=8.0 in the elution buffer.

GENE INFORMATION

Gene Name NOD1 nucleotide-binding oligomerization domain containing 1 [Homo sapiens]

Official Symbol NOD1

Synonyms

NOD1; nucleotide-binding oligomerization domain containing 1; CARD4, caspase recruitment domain family, member 4; nucleotide-binding oligomerization domain-containing protein 1; CLR7.1; NLR family; CARD domain containing 1; NLRC1; nucleotide binding oligomerization domain; leucine rich repeat and CARD domain containing 1; NLR family, CARD domain containing 1; caspase recruitment domain family, member 4; caspase recruitment domain-containing protein 4; nucleotide-binding oligomerization domain, leucine rich repeat and CARD domain containing 1; CARD4;

Gene ID 10392

mRNA Refseq NM_006092

Protein Refseq NP_006083

MIM 605980

 Tel: 1-631-559-9269 1-516-512-3133

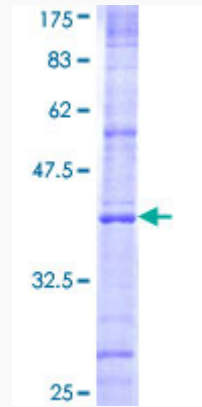
 Email: info@creative-biomart.com  Fax: 1-631-938-8127

 45-1 Ramsey Road, Shirley, NY 11967, USA

UniProt ID

Q9Y239

Quality Control
Testing



12.5% SDS-PAGE Stained with Coomassie Blue.

 Tel: 1-631-559-9269 1-516-512-3133

 Email: info@creative-biomart.com  Fax: 1-631-938-8127

 45-1 Ramsey Road, Shirley, NY 11967, USA