

Recombinant Human NOD2 Protein, His-tagged

Cat. No. NOD2-25H Lot. No. (See product label)

SPECIFICATION

Product Overview	Recombinant Human NOD2 Protein(92-193 aa), fused with N-terminal His tag, was expressed in E. coli.
Species	Human
Source	E.coli
ProteinLength	92-193 aa
Form	The purified protein was Lyophilized from sterile PBS (58mM Na ₂ HPO ₄ , 17mM NaH ₂ PO ₄ , 68mM NaCl, pH7.4). 5 % trehalose and 5 % mannitol are added as protectant before lyophilization. The elution buffer contain 300mM imidazole.
Storage	Short-term storage: Store at 2-8°C for (1-2 weeks). Long-term storage: Aliquot and store at -20°C to -80°C for up to 3 months, reconstitution with sterile water and addition of an equal volume of glycerol. Avoid repeat freeze-thaw cycles.
AA Sequence	VWNLKGTWACQKLIAAAQEAQADSQSPKLHGCVDPHSLHPARDLQSHRPAIVRRLLHSHVENMLDLAWERGFVSQYECDEIRLPIFTPSQRARRLLDLATVKAN
Purity	80%, by SDS-PAGE with Coomassie Brilliant Blue staining.

GENE INFORMATION

Official Symbol	NOD2
------------------------	-------------

 Tel: 1-631-559-9269 1-516-512-3133

 Email: info@creative-biomart.com  Fax: 1-631-938-8127

 45-1 Ramsey Road, Shirley, NY 11967, USA

Synonyms

NOD2; nucleotide-binding oligomerization domain containing 2; CARD15, caspase recruitment domain family, member 15 , IBD1; nucleotide-binding oligomerization domain-containing protein 2; BLAU; CD; CLR16.3; NLR family; CARD domain containing 2; NLRC2; NOD like receptor C2; nucleotide binding oligomerization domain; leucine rich repeat and CARD domain containing 2; PSORAS1; NOD-like receptor C2; NLR family, CARD domain containing 2; inflammatory bowel disease protein 1; caspase recruitment domain protein 15; nucleotide-binding oligomerization domain 2; caspase recruitment domain family, member 15; caspase recruitment domain-containing protein 15; nucleotide-binding oligomerization domain, leucine rich repeat and CARD domain containing 2; ACUG; IBD1; NOD2B; CARD15;

Gene ID

64127

mRNA Refseq

NM_022162

Protein Refseq

NP_071445

MIM

605956

UniProt ID

Q9HC29

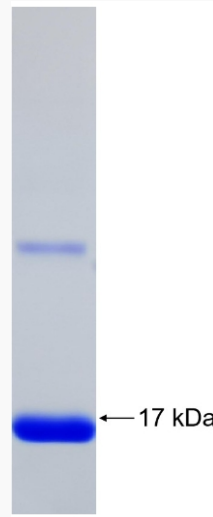
 Tel: 1-631-559-9269 1-516-512-3133

 Email: info@creative-biomart.com  Fax: 1-631-938-8127

 45-1 Ramsey Road, Shirley, NY 11967, USA



SDS-PAGE



Tel: 1-631-559-9269 1-516-512-3133

Email: info@creative-biomart.com Fax: 1-631-938-8127

45-1 Ramsey Road, Shirley, NY 11967, USA