

Recombinant Bovine NOS3 Protein

Cat. No. NOS3-003B Lot. No. (See product label)

SPECIFICATION

Product Overview	Recombinant full length bovine NOS3 Protein (2-1205) without tag was expressed in E. coli.
Species	Bovine
Source	E.coli
ProteinLength	2-1205
Description	Produces nitric oxide (NO).
Molecular Mass	134 kDa
Purity	Partially pure
Unit Definition	One unit of enzyme produces 1 nmol of nitric oxide per minute at 37 centigrade in 50 mM HEPES, pH 7.8, with 5 µM oxyhemoglobin, 1 mM calcium chloride, 20 µg/mL calmodulin, 0.1 mM NADPH, 50 µM arginine, 12 µM tetrahydrobiopterin, and 170 µM DTT.
Applications	Enzyme assay
Stability	≥ 2 years
Storage	At -80 centigrade.

 Tel: 1-631-559-9269 1-516-512-3133

 Email: info@creative-biomart.com  Fax: 1-631-938-8127

 45-1 Ramsey Road, Shirley, NY 11967, USA

Storage Buffer 50 mM HEPES, pH 7.8, with 0.5 mM DTT, 0.5 mM EDTA, 300 mM sodium chloride, 2 mM calcium chloride, 10 μM tetrahydro-L-biopterin (hydrochloride), and 20% glycerol

GENE INFORMATION

Gene Name NOS3 nitric oxide synthase 3 [*Bos taurus* (cattle)]

Official Symbol NOS3

Synonyms NOS3; nitric oxide synthase 3; nitric oxide synthase, endothelial; EC-NOS; NOS type III; NOSIII; cNOS; constitutive NOS; eNOS; endothelial NOS; endothelial nitric oxide synthase; nitric oxide synthase 3 (endothelial cell); EC 1.14.13.39

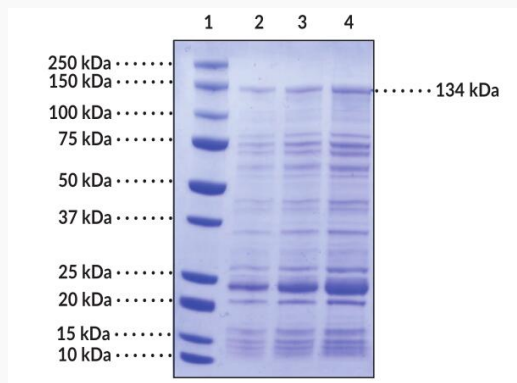
Gene ID 287024

mRNA Refseq NM_181037

Protein Refseq NP_851380

UniProt ID A0A3Q1LSD1

SDS-PAGE analysis of eNOS



Tel: 1-631-559-9269 1-516-512-3133

Email: info@creative-biomart.com Fax: 1-631-938-8127

45-1 Ramsey Road, Shirley, NY 11967, USA

Lane 1: MW Markers

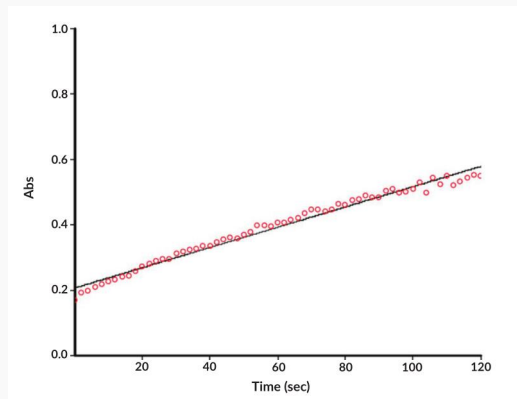
Lane 2: GPI (4 µg)

Lane 3: GPI (2 µg)

Lane 4: Cit. GPI (4 µg)

Lane 5: Cit. GPI (3 µg)

**eNOS (bovine,
recombinant; E. coli
expressed) Activity**



 Tel: 1-631-559-9269 1-516-512-3133

 Email: info@creative-biomart.com  Fax: 1-631-938-8127

 45-1 Ramsey Road, Shirley, NY 11967, USA