

## Recombinant Human NOS3 Protein, GST-tagged

Cat. No. NOS3-5993H Lot. No. (See product label)

### SPECIFICATION

<b>Product Overview</b>	Human NOS3 partial ORF ( AAH63294.1, 61 a.a. - 160 a.a.) recombinant protein with GST-tag at N-terminal.
<b>Species</b>	Human
<b>Source</b>	Wheat Germ
<b>Description</b>	Nitric oxide is a reactive free radical which acts as a biologic mediator in several processes, including neurotransmission and antimicrobial and antitumoral activities. Nitric oxide is synthesized from L-arginine by nitric oxide synthases. Variations in this gene are associated with susceptibility to coronary spasm. Multiple transcript variants encoding different isoforms have been found for this gene. [provided by RefSeq]
<b>Molecular Mass</b>	36.63 kDa
<b>AA Sequence</b>	QPPEGPKFPRVKNWEVGSITYDTLSAQAQQDGPCTPRRCLGSLVFPRKLQGRPSP GPPAPEQLLSQARDFINQYYSSIKRSGSQAHEQRLQEVEAEVAAT
<b>Applications</b>	Enzyme-linked Immunoabsorbent Assay Western Blot (Recombinant protein) Antibody Production Protein Array
<b>Notes</b>	Best use within three months from the date of receipt of this protein.

 Tel: 1-631-559-9269 1-516-512-3133

 Email: [info@creative-biomart.com](mailto:info@creative-biomart.com)  Fax: 1-631-938-8127

 45-1 Ramsey Road, Shirley, NY 11967, USA

**Storage** Store at -80 centigrade. Aliquot to avoid repeated freezing and thawing.

**Storage Buffer** 50 mM Tris-HCl, 10 mM reduced Glutathione, pH=8.0 in the elution buffer.

## GENE INFORMATION

**Gene Name** NOS3 nitric oxide synthase 3 (endothelial cell) [ Homo sapiens ]

**Official Symbol** NOS3

**Synonyms** NOS3; nitric oxide synthase 3 (endothelial cell); nitric oxide synthase, endothelial; ECNOS; endothelial nitric oxide synthase; eNOS; cNOS; EC-NOS; NOSIII; NOS type III; endothelial NOS; constitutive NOS;

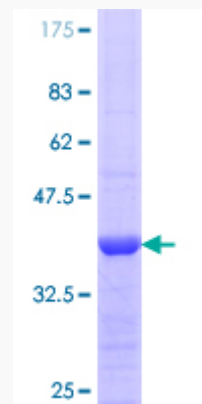
**Gene ID** 4846

**mRNA Refseq** NM\_000603

**Protein Refseq** NP\_000594

**UniProt ID** P29474

**Quality Control Testing:**



 Tel: 1-631-559-9269 1-516-512-3133

 Email: [info@creative-biomart.com](mailto:info@creative-biomart.com)  Fax: 1-631-938-8127

 45-1 Ramsey Road, Shirley, NY 11967, USA



12.5% SDS-PAGE Stained with Coomassie Blue.

 Tel: 1-631-559-9269 1-516-512-3133

 Email: [info@creative-biomart.com](mailto:info@creative-biomart.com)  Fax: 1-631-938-8127

 45-1 Ramsey Road, Shirley, NY 11967, USA