

Recombinant Human NOTCH1 protein, His-Avi-tagged, Biotinylated

Cat. No. NOTCH1-531HB Lot. No. (See product label)

SPECIFICATION

Product Overview	Biotinylated Recombinant Human NOTCH1 protein(P46531)(Ala19-Gln526), fused with C-terminal His and Avi tag, was expressed in HEK293.
Species	Human
Source	HEK293
ProteinLength	Ala19-Gln526
Tag	C-His-Avi
Conjugation/Label	Biotin
Form	Lyophilized from 0.22µm filtered solution in PBS (pH 7.4). Normally 5% trehalose is added as protectant before lyophilization.
Bio-activity	Immobilized Biotinylated Human Notch 1, His Tag at 1ug/ml (100ul/well) on the streptavidin precoated plate (5ug/ml). Dose response curve for Human DLL4, hFc Tag with the EC50 of 7.0ng/ml determined by ELISA.
Molecular Mass	The protein has a predicted MW of 56.5 kDa. Due to glycosylation, the protein migrates to 70-80 kDa based on Tris-Bis PAGE result.
Endotoxin	Less than 1EU per µg by the LAL method.

 Tel: 1-631-559-9269 1-516-512-3133

 Email: info@creative-biomart.com  Fax: 1-631-938-8127

 45-1 Ramsey Road, Shirley, NY 11967, USA

Purity	> 95% as determined by Tris-Bis PAGE;> 95% as determined by HPLC
Storage	Reconstituted protein stable at -80°C for 12 months, 4°C for 1 week. Use a manual defrost freezer and avoid repeated freeze-thaw cycles.
Reconstitution	Centrifuge tubes before opening. Reconstituting to a concentration more than 100 µg/ml is recommended. Dissolve the lyophilized protein in distilled water.
Conjugation	Biotin

GENE INFORMATION

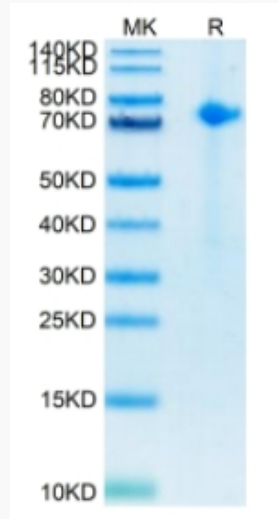
Gene Name	NOTCH1 notch 1 [Homo sapiens]
Official Symbol	NOTCH1
Synonyms	NOTCH1; notch 1; Notch (Drosophila) homolog 1 (translocation associated) , Notch homolog 1, translocation associated (Drosophila) , TAN1; neurogenic locus notch homolog protein 1; Notch homolog 1, translocation-associated; translocation-associated notch protein TAN-1; hN1; TAN1;
Gene ID	4851
mRNA Refseq	NM_017617
Protein Refseq	NP_060087
MIM	190198
UniProt ID	P46531

 Tel: 1-631-559-9269 1-516-512-3133

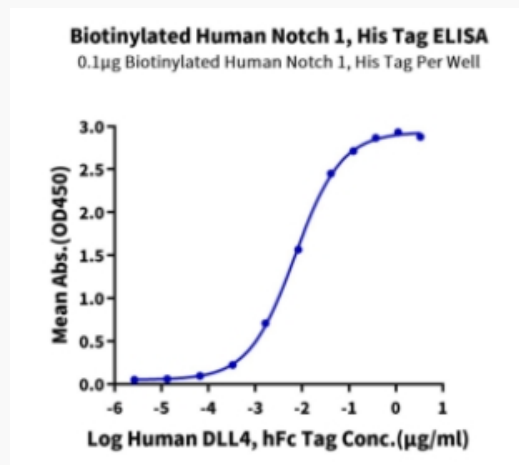
 Email: info@creative-biomart.com  Fax: 1-631-938-8127

 45-1 Ramsey Road, Shirley, NY 11967, USA

Tris-Bis PAGE



ELISA Data



 Tel: 1-631-559-9269 1-516-512-3133

 Email: info@creative-biomart.com  Fax: 1-631-938-8127

 45-1 Ramsey Road, Shirley, NY 11967, USA