

Recombinant Human NOTCH1 Protein, GST-tagged

Cat. No. NOTCH1-5996H Lot. No. (See product label)

SPECIFICATION

Product Overview Human NOTCH1 partial ORF (NP_060087, 23 a.a. - 132 a.a.) recombinant protein with GST-tag at N-terminal.

Species Human

Source Wheat Germ

Description

This gene encodes a member of the Notch family. Members of this Type 1 transmembrane protein family share structural characteristics including an extracellular domain consisting of multiple epidermal growth factor-like (EGF) repeats, and an intracellular domain consisting of multiple, different domain types. Notch family members play a role in a variety of developmental processes by controlling cell fate decisions. The Notch signaling network is an evolutionarily conserved intercellular signaling pathway which regulates interactions between physically adjacent cells. In Drosophila, notch interaction with its cell-bound ligands (delta, serrate) establishes an intercellular signaling pathway that plays a key role in development. Homologues of the notch-ligands have also been identified in human, but precise interactions between these ligands and the human notch homologues remain to be determined. This protein is cleaved in the trans-Golgi network, and presented on the cell surface as a heterodimer. This protein functions as a receptor for membrane bound ligands, and may play multiple roles during development. [provided by RefSeq]

Molecular Mass 37.84 kDa

 Tel: 1-631-559-9269 1-516-512-3133

 Email: info@creative-biomart.com  Fax: 1-631-938-8127

 45-1 Ramsey Road, Shirley, NY 11967, USA

AA Sequence	RCSQPGETCLNNGGKCEAANGTEACVCGGAFVGPGRCDPNPCLSTPCKNAGTCHV VDRRGVADYACSCALGFSGPLCLTPLDNACLTNPCRNGGTCDLLTLTEYKCRCPGG
Applications	Enzyme-linked Immunoabsorbent Assay Western Blot (Recombinant protein) Antibody Production Protein Array
Notes	Best use within three months from the date of receipt of this protein.
Storage	Store at -80 centigrade. Aliquot to avoid repeated freezing and thawing.
Storage Buffer	50 mM Tris-HCl, 10 mM reduced Glutathione, pH=8.0 in the elution buffer.

GENE INFORMATION

Gene Name	NOTCH1 notch 1 [Homo sapiens]
Official Symbol	NOTCH1
Synonyms	NOTCH1; notch 1; Notch (Drosophila) homolog 1 (translocation associated) , Notch homolog 1, translocation associated (Drosophila) , TAN1; neurogenic locus notch homolog protein 1; Notch homolog 1, translocation-associated; translocation-associated notch protein TAN-1; hN1; TAN1;
Gene ID	4851
mRNA Refseq	NM_017617
Protein Refseq	NP_060087

 Tel: 1-631-559-9269 1-516-512-3133

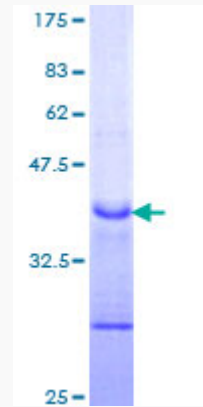
 Email: info@creative-biomart.com  Fax: 1-631-938-8127

 45-1 Ramsey Road, Shirley, NY 11967, USA

MIM 190198

UniProt ID P46531

**Quality Control
Testing:**



12.5% SDS-PAGE Stained with Coomassie Blue.

 Tel: 1-631-559-9269 1-516-512-3133

 Email: info@creative-biomart.com  Fax: 1-631-938-8127

 45-1 Ramsey Road, Shirley, NY 11967, USA