

Recombinant Human NOTCH1 protein(2428-2555aa), His-GST&Myc-tagged

Cat. No. NOTCH1-9118H Lot. No. (See product label)

SPECIFICATION

Product Overview	Recombinant Human NOTCH1 protein(P46531)(2428-2555aa), fused with N-terminal His and GST and C-terminal Myc tag, was expressed in E. coli.
Species	Human
Source	E.coli
ProteinLength	2428-2555aa
Form	If the delivery form is liquid, the default storage buffer is Tris/PBS-based buffer, 5%-50% glycerol. If the delivery form is lyophilized powder, the buffer before lyophilization is Tris/PBS-based buffer, 6% Trehalose, pH 8.0.
Molecular Mass	48.7 kDa
Purity	Greater than 85% as determined by SDS-PAGE.
Storage	Store at -20°C/-80°C upon receipt, aliquoting is necessary for multiple use. Avoid repeated freeze-thaw cycles.
Reconstitution	We recommend that this vial be briefly centrifuged prior to opening to bring the contents to the bottom. Please reconstitute protein in deionized sterile water to a concentration of 0.1-1.0 mg/mL. We recommend to add 5-50% of glycerol (final concentration) and aliquot for long-term storage at -20°C/-80°C.

 Tel: 1-631-559-9269 1-516-512-3133

 Email: info@creative-biomart.com  Fax: 1-631-938-8127

 45-1 Ramsey Road, Shirley, NY 11967, USA

AA Sequence HLGRSFLSGEPSQADVQPLGPSSSLAVHTILPQESPALPTSLPSSLVPPVTAAQFLTPP
SQHSYSSPVDNTPSHQLQVPEHPFLTPSPESPDQWSSSSPHSNVSDWSEGVSSPP
TSMQSQIARPEAFK

GENE INFORMATION

Gene Name [NOTCH1 notch 1 \[Homo sapiens \]](#)

Official Symbol [NOTCH1](#)

Synonyms

NOTCH1; notch 1; Notch (Drosophila) homolog 1 (translocation associated) , Notch homolog 1, translocation associated (Drosophila) , TAN1; neurogenic locus notch homolog protein 1; Notch homolog 1, translocation-associated; translocation-associated notch protein TAN-1; hN1; TAN1;

Gene ID [4851](#)

mRNA Refseq [NM_017617](#)

Protein Refseq [NP_060087](#)

MIM [190198](#)

UniProt ID [P46531](#)

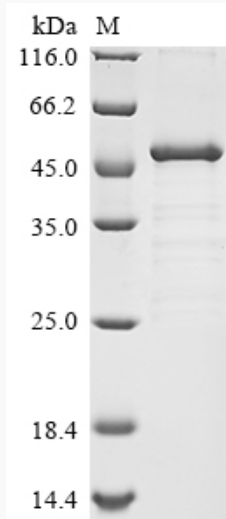
 Tel: 1-631-559-9269 1-516-512-3133

 Email: info@creative-biomart.com  Fax: 1-631-938-8127

 45-1 Ramsey Road, Shirley, NY 11967, USA



SDS-PAGE



Tel: 1-631-559-9269 1-516-512-3133

Email: info@creative-biomart.com Fax: 1-631-938-8127

45-1 Ramsey Road, Shirley, NY 11967, USA