

Recombinant Human NOTCH2NL protein, His & T7-tagged

Cat. No. NOTCH2NL-1601H Lot. No. (See product label)

SPECIFICATION

| | |
|-------------------------|---|
| Product Overview | Recombinant Human NOTCH2NL aa. (Met1~Asn236 (Accession # Q7Z3S9)) fused with N-terminal His & T7 tag was produced in E. coli cells. |
| Species | Human |
| Source | E.coli |
| ProteinLength | Met1~Asn236 |
| Form | Freeze-dried powder |
| Molecular Mass | Predicted Molecular Mass: 29.5kDa |
| Endotoxin | <1.0EU per 1ug (determined by the LAL method) |
| Purity | >90% |
| Applications | SDS-PAGE; WB; ELISA; IP. |
| Stability | The thermal stability is described by the loss rate. The loss rate was determined by accelerated thermal degradation test, that is, incubate the protein at 37°C for 48h, and no obvious degradation and precipitation were observed. The loss rate is less than 5% within the expiration date under appropriate storage condition. |
| Storage | Avoid repeated freeze/thaw cycles. Store at 2-8°C for one month. Aliquot and store at |

 Tel: 1-631-559-9269 1-516-512-3133

 Email: info@creative-biomart.com  Fax: 1-631-938-8127

 45-1 Ramsey Road, Shirley, NY 11967, USA

-80°C for 12 months.

Storage buffer Supplied as lyophilized form in PBS, pH7.4, containing 5% trehalose, 0.01% sarcosyl.

Reconstitution Reconstitute in sterile PBS, pH7.2-pH7.4.

Isoelectric Point 5.4

GENE INFORMATION

Gene Name NOTCH2NL notch 2 N-terminal like [Homo sapiens (human)]

Official Symbol NOTCH2NL

Synonyms NOTCH2NL; notch 2 N-terminal like; N2N; notch homolog 2 N-terminal-like protein; Notch homolog 2 N-terminal like protein

Gene ID 388677

mRNA Refseq NM_203458.4

Protein Refseq NP_982283.2

UniProt ID Q7Z3S9

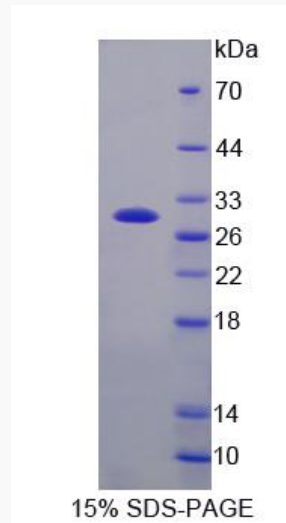
 Tel: 1-631-559-9269 1-516-512-3133

 Email: info@creative-biomart.com  Fax: 1-631-938-8127

 45-1 Ramsey Road, Shirley, NY 11967, USA



SDS-PAGE



Tel: 1-631-559-9269 1-516-512-3133

Email: info@creative-biomart.com Fax: 1-631-938-8127

45-1 Ramsey Road, Shirley, NY 11967, USA