

Recombinant Human NOTCH2NL Protein, GST-tagged

Cat. No. NOTCH2NL-5998H **Lot. No.** (See product label)

SPECIFICATION

Product Overview	Human NOTCH2NL full-length ORF (AAH19835, 1 a.a. - 236 a.a.) recombinant protein with GST-tag at N-terminal.
Species	Human
Source	Wheat Germ
Description	NOTCH2NL (Notch 2 N-Terminal Like) is a Protein Coding gene. Among its related pathways are Notch Signaling Pathway (sino). GO annotations related to this gene include calcium ion binding. An important paralog of this gene is NOTCH2.
Molecular Mass	51.7 kDa
AA Sequence	MCVTYHNGTGYCKCPEGFLGEYCQHRDPCEKNRCQNGGTCVAQAMLGKATCRCA SGFTGEDCQYSTSHPCFVSRPCLNGGTCHMLSRDTYECTCQVGFTGKECQWTD CLSHPCANGSTCTTVANQFSCCKLTGFTGQKCETDVNECDIPGHCQHGGICLNLP SYQCQCLQGFTGQYCDLSLVPCAPSPCVNGGTCRQTGDFTFECNCLPETVRRGTE LWERDREVVWNGKEHDEN
Applications	Enzyme-linked Immunoabsorbent Assay Western Blot (Recombinant protein) Antibody Production Protein Array
Notes	Best use within three months from the date of receipt of this protein.

 Tel: 1-631-559-9269 1-516-512-3133

 Email: info@creative-biomart.com  Fax: 1-631-938-8127

 45-1 Ramsey Road, Shirley, NY 11967, USA

Storage Store at -80 centigrade. Aliquot to avoid repeated freezing and thawing.

Storage Buffer 50 mM Tris-HCl, 10 mM reduced Glutathione, pH=8.0 in the elution buffer.

GENE INFORMATION

Gene Name NOTCH2NL notch 2 N-terminal like [Homo sapiens]

Official Symbol NOTCH2NL

Synonyms NOTCH2NL; notch 2 N-terminal like; Notch homolog 2 (Drosophila) N terminal like; notch homolog 2 N-terminal-like protein; N2N; Notch homolog 2 N-terminal like protein; FLJ35032; FLJ55807;

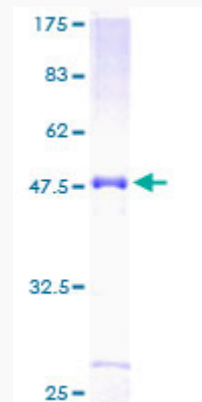
Gene ID 388677

mRNA Refseq NM_203458

Protein Refseq NP_982283

UniProt ID Q7Z3S9

Quality Control Testing:



 Tel: 1-631-559-9269 1-516-512-3133

 Email: info@creative-biomart.com  Fax: 1-631-938-8127

 45-1 Ramsey Road, Shirley, NY 11967, USA



12.5% SDS-PAGE Stained with Coomassie Blue.

 Tel: 1-631-559-9269 1-516-512-3133

 Email: info@creative-biomart.com  Fax: 1-631-938-8127

 45-1 Ramsey Road, Shirley, NY 11967, USA