

Recombinant Human NOTCH3 protein, hFc-tagged

Cat. No. NOTCH3-047H Lot. No. (See product label)

SPECIFICATION

Product Overview	Recombinant Human NOTCH3 protein(Q9UM47)(Ala40-Glu467) is expressed from Expi293 with hFc tag at the C-terminal.
Species	Human
Source	HEK293
ProteinLength	Ala40-Glu467
Form	Lyophilized from 0.22µm filtered solution in PBS (pH 7.4). Normally 8% trehalose is added as protectant before lyophilization.
Molecular Mass	The protein has a predicted MW of 71.53 kDa. Due to glycosylation, the protein migrates to 75-83 kDa based on Tris-Bis PAGE result.
Endotoxin	Less than 1EU per µg by the LAL method.
Purity	> 95% as determined by Tris-Bis PAGE > 95% as determined by HPLC
Storage	-20 to -80°C for 12 months as supplied from date of receipt. -20 to -80°C for 3-6 months in unopened state after reconstitution. 2-8°C for 2-7 days after reconstitution. Recommend to aliquot the protein into smaller quantities for optimal storage. Please avoid freeze-thaw cycles.

 Tel: 1-631-559-9269 1-516-512-3133

 Email: info@creative-biomart.com  Fax: 1-631-938-8127

 45-1 Ramsey Road, Shirley, NY 11967, USA

Reconstitution Centrifuge tubes before opening. Reconstituting to a concentration more than 100 µg/ml is recommended. Dissolve the lyophilized protein in distilled water.

GENE INFORMATION

Gene Name NOTCH3 notch 3 [Homo sapiens]

Official Symbol NOTCH3

Synonyms NOTCH3; notch 3; CADASIL, Notch (Drosophila) homolog 3 , Notch homolog 3 (Drosophila); neurogenic locus notch homolog protein 3; CASIL; Notch homolog 3; CADASIL;

Gene ID 4854

mRNA Refseq NM_000435

Protein Refseq NP_000426

MIM 600276

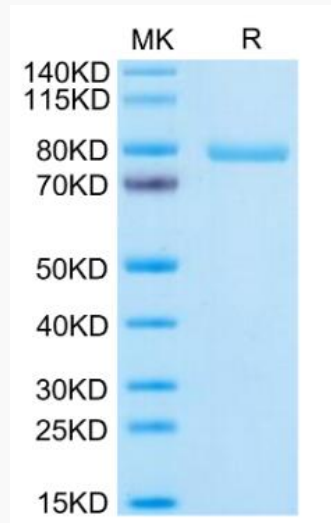
UniProt ID Q9UM47

 Tel: 1-631-559-9269 1-516-512-3133

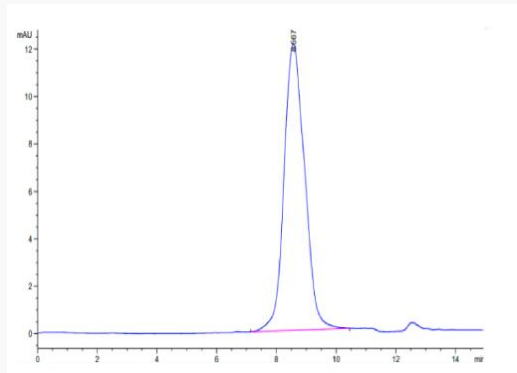
 Email: info@creative-biomart.com  Fax: 1-631-938-8127

 45-1 Ramsey Road, Shirley, NY 11967, USA

Tris-Bis PAGE



SEC-HPLC



 Tel: 1-631-559-9269 1-516-512-3133

 Email: info@creative-biomart.com  Fax: 1-631-938-8127

 45-1 Ramsey Road, Shirley, NY 11967, USA