

## Recombinant Human NOTCH3 protein, His & GST-tagged

Cat. No. NOTCH3-1813H Lot. No. (See product label)

### SPECIFICATION

<b>Product Overview</b>	Recombinant Human NOTCH3 aa. (Leu2053~Gln2318 (Accession # Q9UM47)) fused with N-terminal His & GST tag was produced in E. coli cells.
<b>Species</b>	Human
<b>Source</b>	E.coli
<b>ProteinLength</b>	Leu2053~Gln2318
<b>Description</b>	<p>This gene encodes the third discovered human homologue of the Drosophila melanogaster type I membrane protein notch. In Drosophila, notch interaction with its cell-bound ligands (delta, serrate) establishes an intercellular signalling pathway that plays a key role in neural development. Homologues of the notch-ligands have also been identified in human, but precise interactions between these ligands and the human notch homologues remains to be determined. Mutations in NOTCH3 have been identified as the underlying cause of cerebral autosomal dominant arteriopathy with subcortical infarcts and leukoencephalopathy (CADASIL).</p>
<b>Form</b>	Freeze-dried powder
<b>Molecular Mass</b>	Predicted Molecular Mass: 59.2kDa
<b>Endotoxin</b>	<1.0EU per 1ug (determined by the LAL method)
<b>Purity</b>	>95%

 Tel: 1-631-559-9269 1-516-512-3133

 Email: [info@creative-biomart.com](mailto:info@creative-biomart.com)  Fax: 1-631-938-8127

 45-1 Ramsey Road, Shirley, NY 11967, USA

<b>Applications</b>	SDS-PAGE; WB; ELISA; IP.
<b>Stability</b>	The thermal stability is described by the loss rate. The loss rate was determined by accelerated thermal degradation test, that is, incubate the protein at 37°C for 48h, and no obvious degradation and precipitation were observed. The loss rate is less than 5% within the expiration date under appropriate storage condition.
<b>Storage</b>	Avoid repeated freeze/thaw cycles. Store at 2-8°C for one month. Aliquot and store at -80°C for 12 months.
<b>Storage buffer</b>	Supplied as lyophilized form in PBS, pH7.4, containing 5% trehalose, 0.01% sarcosyl.
<b>Reconstitution</b>	Reconstitute in sterile PBS, pH7.2-pH7.4.
<b>Isoelectric Point</b>	8.1

## GENE INFORMATION

<b>Gene Name</b>	NOTCH3 notch 3 [ Homo sapiens (human) ]
<b>Official Symbol</b>	NOTCH3
<b>Synonyms</b>	NOTCH3; notch 3; IMF2; LMNS; CASIL; CADASIL; CADASIL1; neurogenic locus notch homolog protein 3; Notch homolog 3;
<b>Gene ID</b>	4854
<b>mRNA Refseq</b>	NM_000435.2
<b>Protein Refseq</b>	NP_000426.2

 Tel: 1-631-559-9269 1-516-512-3133

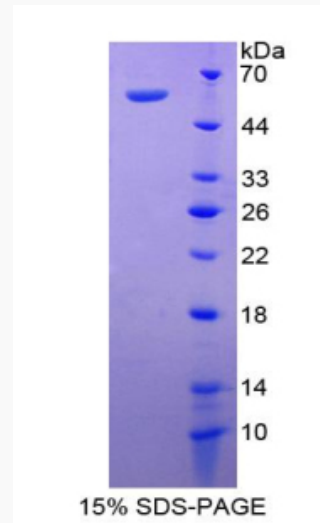
 Email: [info@creative-biomart.com](mailto:info@creative-biomart.com)  Fax: 1-631-938-8127

 45-1 Ramsey Road, Shirley, NY 11967, USA

UniProt ID

Q9UM47

SDS-PAGE



 Tel: 1-631-559-9269 1-516-512-3133

 Email: [info@creative-biomart.com](mailto:info@creative-biomart.com)  Fax: 1-631-938-8127

 45-1 Ramsey Road, Shirley, NY 11967, USA