

Recombinant Human NOTCH3 Protein (Ala40-Glu467), N-His tagged

Cat. No. NOTCH3-4721H Lot. No. (See product label)

SPECIFICATION

Product Overview	Recombinant human NOTCH3 (Ala40-Glu467) fused with the N-His tag was expressed in E. coli.
Species	Human
Source	E.coli
ProteinLength	Ala40-Glu467
Form	Lyophilized powder/frozen liquid
Molecular Mass	47.08 kDa
Purity	>90% as determined by SDS-PAGE.
Notes	For research use only.
Storage	Use a manual defrost freezer and avoid repeated freeze thaw cycles. Store at 2 to 8 centigrade for one week. Store at -20 to -80 centigrade for twelve months from the date of receipt.
Storage Buffer	0.01M PBS, pH 7.4, 0.02% NLS
Reconstitution	Reconstitute in sterile water for a stock solution.

 Tel: 1-631-559-9269 1-516-512-3133

 Email: info@creative-biomart.com  Fax: 1-631-938-8127

 45-1 Ramsey Road, Shirley, NY 11967, USA

Shipping They are shipped out with dry ice/blue ice unless customers require otherwise.

GENE INFORMATION

Gene Name NOTCH3 notch 3 [Homo sapiens (human)]

Official Symbol NOTCH3

Synonyms NOTCH3; notch 3; CADASIL, Notch (Drosophila) homolog 3, Notch homolog 3 (Drosophila); neurogenic locus notch homolog protein 3; CASIL; Notch homolog 3; CADASIL;

Gene ID 4854

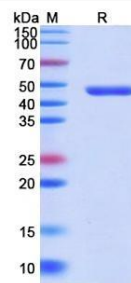
mRNA Refseq NM_000435

Protein Refseq NP_000426

MIM 600276

UniProt ID Q9UM47

SDS-PAGE



 Tel: 1-631-559-9269 1-516-512-3133

 Email: info@creative-biomart.com  Fax: 1-631-938-8127

 45-1 Ramsey Road, Shirley, NY 11967, USA