

Recombinant Human NOTCH3 Protein, GST-tagged

Cat. No. NOTCH3-5999H **Lot. No.** (See product label)

SPECIFICATION

Product Overview	Human NOTCH3 partial ORF (NP_000426, 47 a.a. - 156 a.a.) recombinant protein with GST-tag at N-terminal.
Species	Human
Source	Wheat Germ
Description	This gene encodes the third discovered human homologue of the <i>Drosophila melanogaster</i> type I membrane protein notch. In <i>Drosophila</i> , notch interaction with its cell-bound ligands (delta, serrate) establishes an intercellular signalling pathway that plays a key role in neural development. Homologues of the notch-ligands have also been identified in human, but precise interactions between these ligands and the human notch homologues remains to be determined. Mutations in NOTCH3 have been identified as the underlying cause of cerebral autosomal dominant arteriopathy with subcortical infarcts and leukoencephalopathy (CADASIL). [provided by RefSeq]
Molecular Mass	37.84 kDa
AA Sequence	SPCANGGRCTQLPSREAACLPPGWVGERCQLEDPCHSGPCAGRGVCQSSVVAG TARFSCRCPRGFRGPDCSLPDPCLSSPCAHGARCSVGPDGRFLCSCPPGYQGRS CR
Applications	Enzyme-linked Immunoabsorbent Assay Western Blot (Recombinant protein) Antibody Production

 Tel: 1-631-559-9269 1-516-512-3133

 Email: info@creative-biomart.com  Fax: 1-631-938-8127

 45-1 Ramsey Road, Shirley, NY 11967, USA

Protein Array

Notes	Best use within three months from the date of receipt of this protein.
Storage	Store at -80 centigrade. Aliquot to avoid repeated freezing and thawing.
Storage Buffer	50 mM Tris-HCl, 10 mM reduced Glutathione, pH=8.0 in the elution buffer.

GENE INFORMATION

Gene Name	NOTCH3 notch 3 [Homo sapiens]
Official Symbol	NOTCH3
Synonyms	NOTCH3; notch 3; CADASIL, Notch (Drosophila) homolog 3 , Notch homolog 3 (Drosophila); neurogenic locus notch homolog protein 3; CASIL; Notch homolog 3; CADASIL;
Gene ID	4854
mRNA Refseq	NM_000435
Protein Refseq	NP_000426
MIM	600276
UniProt ID	Q9UM47

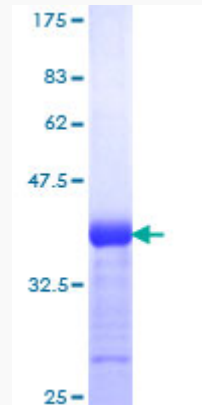
 Tel: 1-631-559-9269 1-516-512-3133

 Email: info@creative-biomart.com  Fax: 1-631-938-8127

 45-1 Ramsey Road, Shirley, NY 11967, USA

Quality Control

Testing:



12.5% SDS-PAGE Stained with Coomassie Blue.

 Tel: 1-631-559-9269 1-516-512-3133

 Email: info@creative-biomart.com  Fax: 1-631-938-8127

 45-1 Ramsey Road, Shirley, NY 11967, USA