

Recombinant Human NOTCH3 protein, His-Avi-tagged

Cat. No. NOTCH3-947H Lot. No. (See product label)

SPECIFICATION

Product Overview	Recombinant Human NOTCH3 protein(Q9UM47)(Ala40-Glu467), fused with C-terminal His and Avi tag, was expressed in HEK293.
Species	Human
Source	HEK293
ProteinLength	Ala40-Glu467
Tag	C-His-Avi
Form	Lyophilized from 0.22µm filtered solution in PBS (pH 7.4). Normally 8% trehalose is added as protectant before lyophilization.
Molecular Mass	The protein has a predicted MW of 47.7 kDa. Due to glycosylation, the protein migrates to 53-60 kDa based on Tris-Bis PAGE result.
Endotoxin	Less than 1EU per µg by the LAL method.
Purity	> 95% as determined by Tris-Bis PAGE; > 95% as determined by HPLC
Storage	Reconstituted protein stable at -80°C for 12 months, 4°C for 1 week. Use a manual defrost freezer and avoid repeated freeze-thaw cycles.
Reconstitution	Centrifuge tubes before opening. Reconstituting to a concentration more than 100

 Tel: 1-631-559-9269 1-516-512-3133

 Email: info@creative-biomart.com  Fax: 1-631-938-8127

 45-1 Ramsey Road, Shirley, NY 11967, USA

µg/ml is recommended. Dissolve the lyophilized protein in distilled water.

GENE INFORMATION

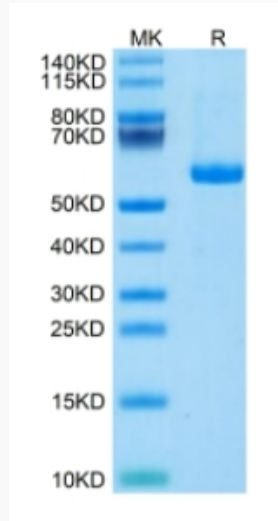
Gene Name	NOTCH3 notch 3 [Homo sapiens]
Official Symbol	NOTCH3
Synonyms	NOTCH3; notch 3; CADASIL, Notch (Drosophila) homolog 3 , Notch homolog 3 (Drosophila); neurogenic locus notch homolog protein 3; CASIL; Notch homolog 3; CADASIL;
Gene ID	4854
mRNA Refseq	NM_000435
Protein Refseq	NP_000426
MIM	600276
UniProt ID	Q9UM47

 Tel: 1-631-559-9269 1-516-512-3133

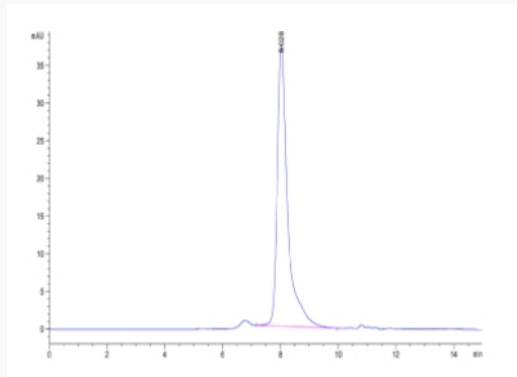
 Email: info@creative-biomart.com  Fax: 1-631-938-8127

 45-1 Ramsey Road, Shirley, NY 11967, USA

Tris-Bis PAGE



SEC-HPLC



 Tel: 1-631-559-9269 1-516-512-3133

 Email: info@creative-biomart.com  Fax: 1-631-938-8127

 45-1 Ramsey Road, Shirley, NY 11967, USA