

Active Recombinant Human NOTCH3 protein, His-tagged

Cat. No. NOTCH3-948H Lot. No. (See product label)

SPECIFICATION

Product Overview	Recombinant Human NOTCH3 protein(Q9UM47)(Ala1378-Ser1640) is expressed from Expi293 with His tag at the C-terminal.
Species	Human
Source	HEK293
ProteinLength	Ala1378-Ser1640
Form	Lyophilized from 0.22µm filtered solution in PBS (pH 7.4). Normally 8% trehalose is added as protectant before lyophilization.
Bio-activity	Immobilized Human Notch 3, His Tag at 2µg/ml (100µl/Well) on the plate. Dose response curve for Anti-Notch 3 Antibody, hFc Tag with the EC50 of 8.2ng/ml determined by ELISA.
Molecular Mass	The protein has a predicted MW of 30.18 kDa. Due to furin-like protease cleavage and glycosylation, the protein migrates to 27-30 kDa and 10-12 kDa based on Tris-Bis PAGE result.
Endotoxin	Less than 1EU per µg by the LAL method.
Purity	> 95% as determined by Tris-Bis PAGE > 95% as determined by HPLC

 Tel: 1-631-559-9269 1-516-512-3133

 Email: info@creative-biomart.com  Fax: 1-631-938-8127

 45-1 Ramsey Road, Shirley, NY 11967, USA

Storage

-20 to -80°C for 12 months as supplied from date of receipt.
 -20 to -80°C for 3-6 months in unopened state after reconstitution.
 2-8°C for 2-7 days after reconstitution.
 Recommend to aliquot the protein into smaller quantities for optimal storage. Please avoid freeze-thaw cycles.

Reconstitution

Centrifuge tubes before opening. Reconstituting to a concentration more than 100 µg/ml is recommended. Dissolve the lyophilized protein in distilled water.

GENE INFORMATION

Gene Name [NOTCH3 notch 3 \[Homo sapiens \]](#)

Official Symbol [NOTCH3](#)

Synonyms NOTCH3; notch 3; CADASIL, Notch (Drosophila) homolog 3 , Notch homolog 3 (Drosophila); neurogenic locus notch homolog protein 3; CASIL; Notch homolog 3; CADASIL;

Gene ID [4854](#)

mRNA Refseq [NM_000435](#)

Protein Refseq [NP_000426](#)

MIM [600276](#)

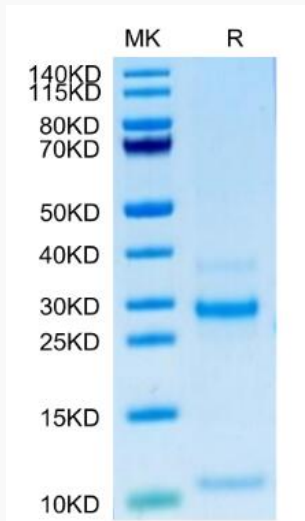
UniProt ID [Q9UM47](#)

 Tel: 1-631-559-9269 1-516-512-3133

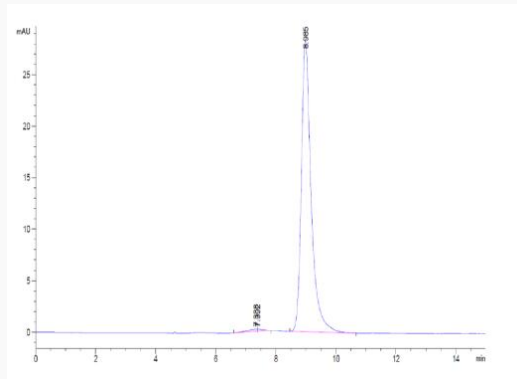
 Email: info@creative-biomart.com  Fax: 1-631-938-8127

 45-1 Ramsey Road, Shirley, NY 11967, USA

Tris-Bis PAGE



SEC-HPLC

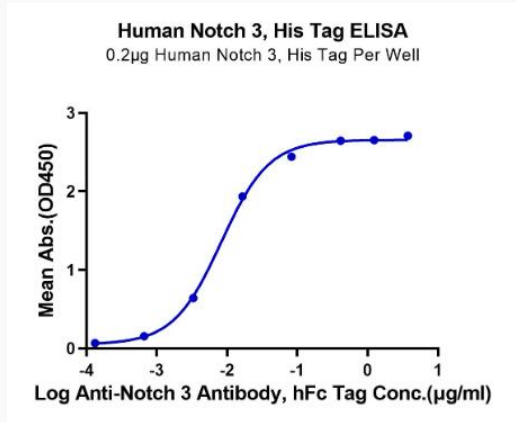


 Tel: 1-631-559-9269 1-516-512-3133

 Email: info@creative-biomart.com  Fax: 1-631-938-8127

 45-1 Ramsey Road, Shirley, NY 11967, USA

ELISA Data



 Tel: 1-631-559-9269 1-516-512-3133

 Email: info@creative-biomart.com  Fax: 1-631-938-8127

 45-1 Ramsey Road, Shirley, NY 11967, USA