

Recombinant Human NOTCH4 protein, His-tagged

Cat. No. NOTCH4-120H Lot. No. (See product label)

SPECIFICATION

Product Overview	Recombinant Human NOTCH4(Asp1715~Gly2001) fused with His tag at N-terminal was expressed in E. coli.
Species	Human
Source	E.coli
ProteinLength	Asp1715~Gly2001
Description	<p>This gene encodes a member of the NOTCH family of proteins. Members of this Type I transmembrane protein family share structural characteristics including an extracellular domain consisting of multiple epidermal growth factor-like (EGF) repeats, and an intracellular domain consisting of multiple different domain types. Notch signaling is an evolutionarily conserved intercellular signaling pathway that regulates interactions between physically adjacent cells through binding of Notch family receptors to their cognate ligands. The encoded preproprotein is proteolytically processed in the trans-Golgi network to generate two polypeptide chains that heterodimerize to form the mature cell-surface receptor. This receptor may play a role in vascular, renal and hepatic development. Mutations in this gene may be associated with schizophrenia. Alternative splicing results in multiple transcript variants, at least one of which encodes an isoform that is proteolytically processed.</p>
Form	PBS, pH7.4, containing 0.01% SKL, 1mM DTT, 5% Trehalose and Proclin300.
Molecular Mass	33.3kDa

 Tel: 1-631-559-9269 1-516-512-3133

 Email: info@creative-biomart.com  Fax: 1-631-938-8127

 45-1 Ramsey Road, Shirley, NY 11967, USA

Endotoxin	<1.0EU per 1g (determined by the LAL method)
Purity	> 95%
Applications	Positive Control; Immunogen; SDS-PAGE; WB. If bio-activity of the protein is needed, please check active protein.
Stability	The thermal stability is described by the loss rate. The loss rate was determined by accelerated thermal degradation test, that is, incubate the protein at 37 centigrade for 48h, and no obvious degradation and precipitation were observed. The loss rate is less than 5% within the expiration date under appropriate storage condition.
Storage	Avoid repeated freeze/thaw cycles. Store at 2-8 centigrade for one month. Aliquot and store at -80 centigrade for 12 months.
Reconstitution	Reconstitute in PBS or others.

GENE INFORMATION

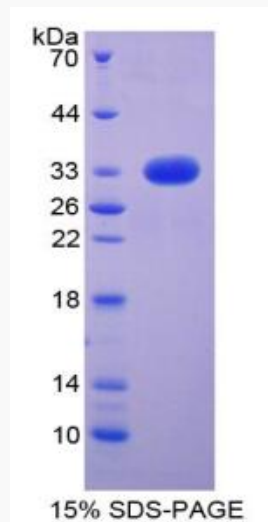
Gene Name	NOTCH4 notch 4 [Homo sapiens]
Official Symbol	NOTCH4
Synonyms	NOTCH4; notch 4; INT3, Notch (Drosophila) homolog 4 , Notch homolog 4 (Drosophila); neurogenic locus notch homolog protein 4; Notch homolog 4; INT3; NOTCH3; FLJ16302; MGC74442;
Gene ID	4855
mRNA Refseq	NM_004557

 Tel: 1-631-559-9269 1-516-512-3133

 Email: info@creative-biomart.com  Fax: 1-631-938-8127

 45-1 Ramsey Road, Shirley, NY 11967, USA

Protein Refseq	NP_004548
MIM	164951
UniProt ID	Q99466
Chromosome Location	6p21.3
Pathway	Delta-Notch Signaling Pathway, organism-specific biosystem; Dorso-ventral axis formation, organism-specific biosystem; Dorso-ventral axis formation, conserved biosystem; Gene Expression, organism-specific biosystem; Generic Transcription Pathway, organism-specific biosystem; Notch signaling pathway, organism-specific biosystem; Notch signaling pathway, organism-specific biosystem;
Function	calcium ion binding; calcium ion binding; protein binding; protein heterodimerization activity; receptor activity;



Tel: 1-631-559-9269 1-516-512-3133

Email: info@creative-biomart.com Fax: 1-631-938-8127

45-1 Ramsey Road, Shirley, NY 11967, USA