

Recombinant Human NOTCH4 Protein (Asp1715-Lys2002), N-His tagged

Cat. No. NOTCH4-4722H Lot. No. (See product label)

SPECIFICATION

Product Overview	Recombinant human NOTCH4 (Asp1715-Lys2002) fused with the N-His tag was expressed in E. coli.
Species	Human
Source	E.coli
ProteinLength	Asp1715-Lys2002
Form	Lyophilized powder/frozen liquid
Molecular Mass	31.95 kDa
Purity	>90% as determined by SDS-PAGE.
Notes	For research use only.
Storage	Use a manual defrost freezer and avoid repeated freeze thaw cycles. Store at 2 to 8 centigrade for one week. Store at -20 to -80 centigrade for twelve months from the date of receipt.
Storage Buffer	0.01M PBS, pH 7.4, 0.02% NLS
Reconstitution	Reconstitute in sterile water for a stock solution.

 Tel: 1-631-559-9269 1-516-512-3133

 Email: info@creative-biomart.com  Fax: 1-631-938-8127

 45-1 Ramsey Road, Shirley, NY 11967, USA

Shipping They are shipped out with dry ice/blue ice unless customers require otherwise.

GENE INFORMATION

Gene Name NOTCH4 notch 4 [Homo sapiens (human)]

Official Symbol NOTCH4

Synonyms NOTCH4; notch 4; INT3, Notch (Drosophila) homolog 4, Notch homolog 4 (Drosophila); neurogenic locus notch homolog protein 4; Notch homolog 4; INT3; NOTCH3; FLJ16302; MGC74442;

Gene ID 4855

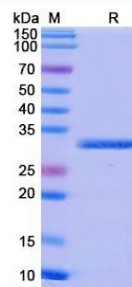
mRNA Refseq NM_004557

Protein Refseq NP_004548

MIM 164951

UniProt ID Q99466

SDS-PAGE



 Tel: 1-631-559-9269 1-516-512-3133

 Email: info@creative-biomart.com  Fax: 1-631-938-8127

 45-1 Ramsey Road, Shirley, NY 11967, USA