

Recombinant Human NOTUM protein, His-tagged

Cat. No. NOTUM-4342H Lot. No. (See product label)

SPECIFICATION

Product Overview	Recombinant Human NOTUM protein(Q6P988)(20-496aa), fused with N-terminal His tag, was expressed in E.coli.
Species	Human
Source	E.coli
ProteinLength	20-496aa
Form	If the delivery form is liquid, the default storage buffer is Tris/PBS-based buffer, 5%-50% glycerol. If the delivery form is lyophilized powder, the buffer before lyophilization is Tris/PBS-based buffer, 6% Trehalose, pH 8.0.
Molecular Mass	57.8 kDa
Purity	Greater than 85% as determined by SDS-PAGE.
Storage	Store at -20°C/-80°C upon receipt, aliquoting is necessary for mutiple use. Avoid repeated freeze-thaw cycles.
Reconstitution	We recommend that this vial be briefly centrifuged prior to opening to bring the contents to the bottom. Please reconstitute protein in deionized sterile water to a concentration of 0.1-1.0 mg/mL. We recommend to add 5-50% of glycerol (final concentration) and aliquot for long-term storage at -20°C/-80°C.

 Tel: 1-631-559-9269 1-516-512-3133

 Email: info@creative-biomart.com  Fax: 1-631-938-8127

 45-1 Ramsey Road, Shirley, NY 11967, USA

AA Sequence

SEGRKTWRRRGQQPPPPRTEAAPAAGQPVESFPLDFTAVEGNMDSFMAQVKSL
 AQSLYPCSAQQLNEDLRLHLLLNTSVTCNDGSPAGYYLKESRGSRRWLLFLEGGW
 YCFNRENCDSRYDTMRRLMSSRDWPRTRTGTGILSSQPEENPYWWNANMVFIPYC
 SSDVWSGASSKSEKNEYAFMGALIIQEVVRELLGRGLSGAKVLLLAGSSAGGTGVLL
 NVDRVAEQLEKLGYPAIQVRGLADSGWFLDNKQYRHTDCVDTITCAPTEAIRRGIRY
 WNGVVPERCRRQFQEGEEWNCFFGYKVYPTLRCPVFFVQWLFDEAQLTVDNVHL
 TGQPVQEGLRLYIQNLGRELRLTKDVPASFAPACLSHEIIIRSHWTDVQVKGTSLPR
 ALHCWDRSLHDSHKASKTPLKGCPVHLVDSCPWPHCNPSCPTVRDQFTGQEMNV
 AQFLMHMGFDMQTVAQPQGLEPSELLGMLSNGS

GENE INFORMATION

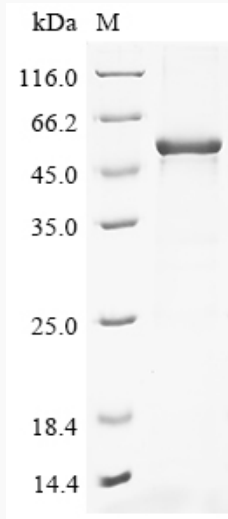
Gene Name	NOTUM notum pectinacylesterase homolog (Drosophila) [Homo sapiens]
Official Symbol	NOTUM
Synonyms	NOTUM; notum pectinacylesterase homolog (Drosophila); protein notum homolog;
Gene ID	147111
mRNA Refseq	NM_178493
Protein Refseq	NP_848588
MIM	609847
UniProt ID	Q6P988

 Tel: 1-631-559-9269 1-516-512-3133

 Email: info@creative-biomart.com  Fax: 1-631-938-8127

 45-1 Ramsey Road, Shirley, NY 11967, USA

SDS-PAGE



 Tel: 1-631-559-9269 1-516-512-3133

 Email: info@creative-biomart.com  Fax: 1-631-938-8127

 45-1 Ramsey Road, Shirley, NY 11967, USA