

## Recombinant Human NOV Protein, GST-tagged

Cat. No. NOV-6000H Lot. No. (See product label)

### SPECIFICATION

<b>Product Overview</b>	Human NOV full-length ORF ( AAH15028, 1 a.a. - 357 a.a.) recombinant protein with GST-tag at N-terminal.
<b>Species</b>	Human
<b>Source</b>	Wheat Germ
<b>Description</b>	The protein encoded by this gene is a small secreted cysteine-rich protein and a member of the CCN family of regulatory proteins. CNN family proteins associate with the extracellular matrix and play an important role in cardiovascular and skeletal development, fibrosis and cancer development. [provided by RefSeq
<b>Molecular Mass</b>	65.01 kDa
<b>AA Sequence</b>	<p>MQSVQSTSFCLRKQCLCLTFLLHLLGQVAATQRCPPQCPGRCPATPPTCAPGVRA  VLDGCSCCLVLCARQRGESCSDLEPCDEGSGLYCDRSADPSKQTGICTAVEGDNCV  FDGVIYRSGEKFQPSCKFQCTCRDQGIGCVPRCQLDVLLPEPNCAPAPRKVEVPGEC  CEKWICGPDEEDSLGGLTLAAAYRPEATLGVEVSDSSVNCIEQTTEWTACSKSCGMG  FSTRVTNRNRQCEMLKQTRLKCMVRPCEQEPEQPTDKKGGKCLRTRKSLKAIHLQFK  NCTSLHTYKPRFCGVCS DGRCC T PHNTKTIQAEFQCSPGQIVKKPVMVIGTCTCHT  NCPKNNEAFLQELELKTTRGKM</p>
<b>Applications</b>	<p>Enzyme-linked Immunoabsorbent Assay  Western Blot (Recombinant protein)  Antibody Production</p>

 Tel: 1-631-559-9269 1-516-512-3133

 Email: [info@creative-biomart.com](mailto:info@creative-biomart.com)  Fax: 1-631-938-8127

 45-1 Ramsey Road, Shirley, NY 11967, USA

Protein Array

<b>Notes</b>	Best use within three months from the date of receipt of this protein.
<b>Storage</b>	Store at -80 centigrade. Aliquot to avoid repeated freezing and thawing.
<b>Storage Buffer</b>	50 mM Tris-HCl, 10 mM reduced Glutathione, pH=8.0 in the elution buffer.

## GENE INFORMATION

<b>Gene Name</b>	NOV nephroblastoma overexpressed [ Homo sapiens ]
<b>Official Symbol</b>	NOV
<b>Synonyms</b>	NOV; nephroblastoma overexpressed; nephroblastoma overexpressed gene; protein NOV homolog; CCN3; IGFBP9; CCN family member 3; IGF-binding protein 9; insulin-like growth factor-binding protein 9; nephroblastoma-overexpressed gene protein homolog; NOVh; IBP-9; IGFBP-9;
<b>Gene ID</b>	4856
<b>mRNA Refseq</b>	NM_002514
<b>Protein Refseq</b>	NP_002505
<b>MIM</b>	164958
<b>UniProt ID</b>	P48745

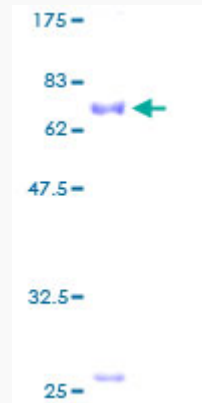
 Tel: 1-631-559-9269 1-516-512-3133

 Email: [info@creative-biomart.com](mailto:info@creative-biomart.com)  Fax: 1-631-938-8127

 45-1 Ramsey Road, Shirley, NY 11967, USA

**Quality Control**

**Testing:**



12.5% SDS-PAGE Stained with Coomassie Blue.

 Tel: 1-631-559-9269 1-516-512-3133

 Email: [info@creative-biomart.com](mailto:info@creative-biomart.com)  Fax: 1-631-938-8127

 45-1 Ramsey Road, Shirley, NY 11967, USA