

Recombinant REBOV(strain Philippines-96) NP protein, His-SUMO-tagged

Cat. No. NP-11R Lot. No. (See product label)

SPECIFICATION

Product Overview	Recombinant REBOV(strain Philippines-96) NP protein(Q91DE1)(414-739aa), fused with His tag and SUMO tag, was expressed in E. coli.
Species	REBOV(strain Philippines-96)
Source	E.coli
ProteinLength	414-739aa
Form	If the delivery form is liquid, the default storage buffer is Tris/PBS-based buffer, 5%-50% glycerol. If the delivery form is lyophilized powder, the buffer before lyophilization is Tris/PBS-based buffer, 6% Trehalose, pH 8.0.
Molecular Mass	53.3kDa
AA Sequence	RPNLGSRQDDDDNEIPFPGPISNNPDQDHLEDDPRDSRDTIIPNSAIDPEDGDFENYN GYHDDEVGTAGDLVLFDLDDHEDDNKAFELQDSSPQSQREIERERLIHPPPGNNKD DNRASDNNQQSADSEEQEGQYNRHRGPERTTANRRLSPVHEEDTPIDQGDDDDPS SPPPLESDDDDASSSQQDPDYTAVAPPAPVYRSAEAHEPPHKSSNEPAETSQNLNED PDIGQSKSMQKLGETYHLLRTQGPF EAINYYHMMKDEPVIFSTDDGKEYTYPDSLE EAYPPWLTEKERLDNENRYIYINNQQFFWPVMSPRDKFLAILQHHQ
Purity	Greater than 90% as determined by SDS-PAGE.

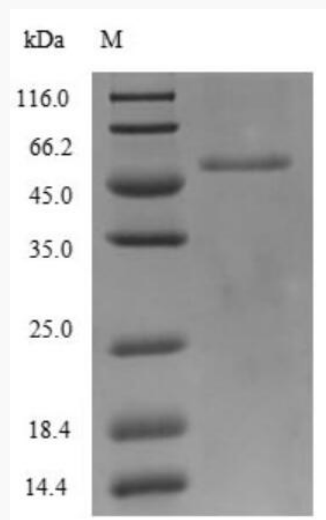
 Tel: 1-631-559-9269 1-516-512-3133

 Email: info@creative-biomart.com  Fax: 1-631-938-8127

 45-1 Ramsey Road, Shirley, NY 11967, USA

Storage Store at -20°C/-80°C upon receipt, aliquoting is necessary for mutiple use. Avoid repeated freeze-thaw cycles.

Reconstitution Please reconstitute protein in deionized sterile water to a concentration of 0.1-1.0 mg/mL. We recommend to add 5-50% of glycerol (final concentration) and aliquot for long-term storage at -20°C/-80°C. Our default final concentration of glycerol is 50%.

SDS-PAGE

 Tel: 1-631-559-9269 1-516-512-3133

 Email: info@creative-biomart.com  Fax: 1-631-938-8127

 45-1 Ramsey Road, Shirley, NY 11967, USA