

## Recombinant LCMV NP Protein, His tagged

Cat. No. NP-1738L Lot. No. (See product label)

### SPECIFICATION

<b>Product Overview</b>	Recombinant LCMV NP Protein with His tag was expressed in E. coli.
<b>Species</b>	LCMV
<b>Source</b>	E.coli
<b>ProteinLength</b>	1-558 aa
<b>Molecular Mass</b>	64 kDa
<b>Purity</b>	> 80% by SDS-PAGE
<b>AA Sequence</b>	<p>MGSSHHHHHHSSGLVPRGSHMSLSKEVKSFQWTQALRRELQSFTSDVKA AVIKDA            TNLLNGLDFSEVSNVQRIMRKEKRDDKDLQRLRSLNQT VHSLVDLKSTSKKNVLKVG            RLSAEELMSLAADLEKLKAKIMRSERPQASGVYMGNLTTQQLDQRSQILQIVGMRKP            QQGASGVVRVWDVKDSSLLNNQFGTMPSLTMACMAKQSQTPLNDVVQALTDLGLL            YTVKYPNLNDLERLKDKHPVLGVITEQQSSINISGYNFSLGAAVKAGAALLDGGNML            ESILIKPSNSEDLLKAVLGAKRKLNMFVSDQVGD RNPYENILYKVCLSGEGWPYIACR            TSIVGRAWENTTIDLTSEKPAVNSPRPAPGAAGPPQVGLSYSQTMLLKDLMGGIDPN            APTWIDIEGRFNDPVEIAIFQPQNGQFIHFYREPV DQKQFKQDSKYSHGMDLADLFN            AQPGLTSSVIGALPQGMVLSCQGSDDIRKLLDSQNRKD IKLIDVEMTREASREYEDK            VWDKYGWLCKMHTGIVRDK KKKKEITPHCALMDCIIFESASKARLPDLKTVHNILPHDL            IFRGPNVVTL</p>
<b>Storage</b>	Store it under sterile conditions at -20 to -80 centigrade. It is recommended that the

 Tel: 1-631-559-9269 1-516-512-3133

 Email: [info@creative-biomart.com](mailto:info@creative-biomart.com)  Fax: 1-631-938-8127

 45-1 Ramsey Road, Shirley, NY 11967, USA

protein be aliquoted for optimal storage. Avoid repeated freeze-thaw cycles.

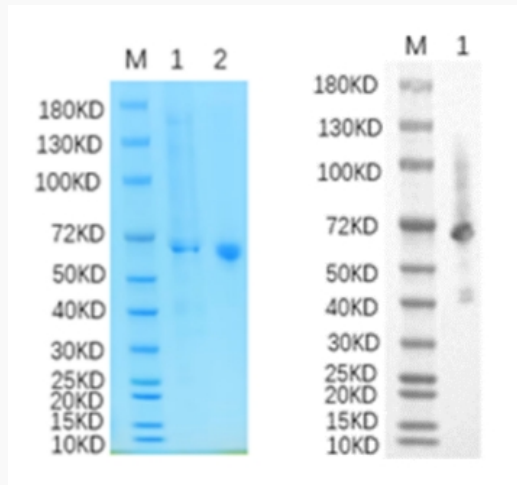
**Storage Buffer**

Sterile 50 mM Tris-HCl (pH 8.0), 300 mM NaCl, 0.1% SKL

**Concentration**

1.15 mg/mL by BCA

**SDS-PAGE**



Reducing 12% SDS-PAGE (CBB stained) and WB (Anti-His Mouse Monoclonal Antibody) analysis profiles of purified NP. 1. NP 2. BSA

Tel: 1-631-559-9269 1-516-512-3133

Email: [info@creative-biomart.com](mailto:info@creative-biomart.com) Fax: 1-631-938-8127

45-1 Ramsey Road, Shirley, NY 11967, USA