

## Recombinant Dog NPC2 Protein (22-149 aa), His-tagged

Cat. No. NPC2-1018D Lot. No. (See product label)

### SPECIFICATION

**Product Overview** Recombinant Dog NPC2 Protein (22-149 aa) is produced by E. coli expression system. This protein is fused with a 6xHis tag at the N-terminal. Protein Description: Full Length of Mature Protein.

**Species** Dog

**Source** E.coli

**ProteinLength** 22-149 aa

**Description** Intracellular cholesterol transporter which acts in concert with NPC1 and plays an important role in the egress of cholesterol from the endosomal/lysosomal compartment. Both NPC1 and NPC2 function as the cellular 'tag team duo' (TTD) to catalyze the mobilization of cholesterol within the multivesicular environment of the late endosome (LE) to effect egress through the limiting bilayer of the LE. NPC2 binds unesterified cholesterol that has been released from LDLs in the lumen of the late endosomes/lysosomes and transfers it to the cholesterol-binding pocket of the N-terminal domain of NPC1. Cholesterol binds to NPC1 with the hydroxyl group buried in the binding pocket and is exported from the limiting mbrane of late endosomes/lysosomes to the ER and plasma mbrane by an unknown mechanism. The secreted form of NCP2 regulates biliary cholesterol secretion via stimulation of ABCG5/ABCG8-mediated cholesterol transport.

**Form** Tris-based buffer, 50% glycerol

 Tel: 1-631-559-9269 1-516-512-3133

 Email: [info@creative-biomart.com](mailto:info@creative-biomart.com)  Fax: 1-631-938-8127

 45-1 Ramsey Road, Shirley, NY 11967, USA

<b>Molecular Mass</b>	18.0 kDa
<b>AA Sequence</b>	VHFKDCGSAVGVIKELNVNCPAQPCCKLHKGQSYSVNVTFTSNIPSQSSKAVVHGIV LGVAVPFPIPEADGCKSGINCPIQKDKTYSYLNKLPVKNEYPSIKLVVQWMLLDGNN QHLFCWEIPVQIEG
<b>Purity</b>	> 90% as determined by SDS-PAGE.
<b>Notes</b>	Repeated freezing and thawing is not recommended. Store working aliquots at 4 centigrade for up to one week.
<b>Storage</b>	The shelf life is related to many factors, storage state, buffer ingredients, storage temperature and the stability of the protein itself. Generally, the shelf life of liquid form is 6 months at -20 centigrade/-80 centigrade. The shelf life of lyophilized form is 12 months at -20 centigrade/-80 centigrade.
<b>Concentration</b>	A hardcopy of COA with concentration instruction is sent along with the products.

## GENE INFORMATION

<b>Gene Name</b>	NPC2 Niemann-Pick disease, type C2 [ <i>Canis lupus familiaris</i> ]
<b>Official Symbol</b>	<a href="#">NPC2</a>
<b>Synonyms</b>	NPC2; Niemann-Pick disease, type C2; CE1;
<b>Gene ID</b>	<a href="#">403920</a>
<b>mRNA Refseq</b>	<a href="#">NM_001003242</a>
<b>Protein Refseq</b>	<a href="#">NP_001003242</a>

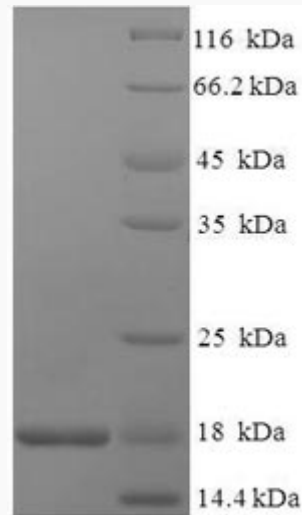
 Tel: 1-631-559-9269 1-516-512-3133

 Email: [info@creative-biomart.com](mailto:info@creative-biomart.com)  Fax: 1-631-938-8127

 45-1 Ramsey Road, Shirley, NY 11967, USA

UniProt ID

Q28895



(Tris-Glycine gel) Discontinuous SDS-PAGE (reduced) with 5% enrichment gel and 15% separation gel.

 Tel: 1-631-559-9269 1-516-512-3133

 Email: [info@creative-biomart.com](mailto:info@creative-biomart.com)  Fax: 1-631-938-8127

 45-1 Ramsey Road, Shirley, NY 11967, USA