

Recombinant Human NPC2 protein, His-tagged

Cat. No. NPC2-162H **Lot. No.** (See product label)

SPECIFICATION

Product Overview	Recombinant Human NPC2 (Glu20-Leu151) protein was fused to His-tag at C-terminus and expressed in human 293 cells (HEK293).
Species	Human
Source	HEK293
ProteinLength	Glu20-Leu151
Description	<p>Niemann-Pick disease type C2 protein (NPC2) is also known as epididymal secretory protein E1 and human epididymis-specific protein 1 (HE1). NPC2 is a intracellular cholesterol transporter which acts in concert with NPC1 and plays an important role in the egress of cholesterol from the endosomal/lysosomal compartment. Both NPC1 and NPC2 function as the cellular 'tag team duo' (TTD) to catalyze the mobilization of cholesterol within the multivesicular environment of the late endosome (LE) to effect egress through the limiting bilayer of the LE. Also,NPC2 binds unesterified cholesterol that has been released from LDLs in the lumen of the late endosomes/lysosomes and transfers it to the cholesterol-binding pocket of the N-terminal domain of NPC1. Furthermore,the secreted form of NCP2 regulates biliary cholesterol secretion via stimulation of ABCG5/ABCG8-mediated cholesterol transport.</p>
Predicted N Terminal	Glu20
Form	Lyophilized from 0.22 µm filtered solution in PBS, pH7.4, 10% trehalose.

 Tel: 1-631-559-9269 1-516-512-3133

 Email: info@creative-biomart.com  Fax: 1-631-938-8127

 45-1 Ramsey Road, Shirley, NY 11967, USA

Molecular Mass	The protein has a calculated MW of 16.5 kDa. The protein migrates as 21 kDa and 24-27 kDa under reducing (R) condition (SDS-PAGE) due to glycosylation.
Endotoxin	Less than 1.0 EU per µg by the LAL method.
Purity	>95% as determined by SDS-PAGE.
Storage	For long term storage, the product should be stored at lyophilized state at -20 centigrade or lower. Please avoid repeated freeze-thaw cycles. This product is stable after storage at: -20 to -70 centigrade for 12 months in lyophilized state; -70 centigrade for 3 months under sterile conditions after reconstitution.
Reconstitution	It is recommended that sterile water be added to the vial to prepare a stock solution of 0.2 ug/ul. Centrifuge the vial at 4°C before opening to recover the entire contents.

GENE INFORMATION

Gene Name	NPC2
Official Symbol	NPC2
Synonyms	NPC2; Niemann-Pick disease, type C2; epididymal secretory protein E1; EDDM1; epididymal protein 1; HE1; NP C2; tissue-specific secretory protein; human epididymis-specific protein 1; niemann-Pick disease type C2 protein; MGC1333
Gene ID	10577
mRNA Refseq	NM_006432

 Tel: 1-631-559-9269 1-516-512-3133

 Email: info@creative-biomart.com  Fax: 1-631-938-8127

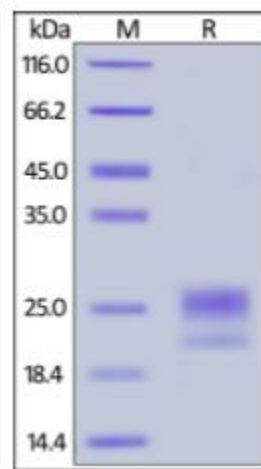
 45-1 Ramsey Road, Shirley, NY 11967, USA

Protein Refseq NP_006423

MIM 601015

UniProt ID P61916

SDS-PAGE of NPC2-162H



Human NPC2, His Tag on SDS-PAGE under reducing (R) condition. The gel was stained overnight with Coomassie Blue. The purity of the protein is greater than 95%.

Tel: 1-631-559-9269 1-516-512-3133

Email: info@creative-biomart.com Fax: 1-631-938-8127

45-1 Ramsey Road, Shirley, NY 11967, USA