

Recombinant Human NPC2 protein, His & GST-tagged

Cat. No. NPC2-1811H Lot. No. (See product label)

SPECIFICATION

Product Overview	Recombinant Human NPC2 aa. (Glu20~Leu151 (Accession # P61916)) fused with N-terminal His & GST tag was produced in E. coli cells.
Species	Human
Source	E.coli
ProteinLength	Glu20~Leu151
Description	This gene encodes a protein containing a lipid recognition domain. The encoded protein may function in regulating the transport of cholesterol through the late endosomal/lysosomal system. Mutations in this gene have been associated with Niemann-Pick disease, type C2 and frontal lobe atrophy.
Form	Freeze-dried powder
Molecular Mass	Predicted Molecular Mass: 44.6kDa
Endotoxin	<1.0EU per 1ug (determined by the LAL method)
Purity	>95%
Applications	SDS-PAGE; WB; ELISA; IP.
Stability	The thermal stability is described by the loss rate. The loss rate was determined by

 Tel: 1-631-559-9269 1-516-512-3133

 Email: info@creative-biomart.com  Fax: 1-631-938-8127

 45-1 Ramsey Road, Shirley, NY 11967, USA

accelerated thermal degradation test, that is, incubate the protein at 37°C for 48h, and no obvious degradation and precipitation were observed. The loss rate is less than 5% within the expiration date under appropriate storage condition.

Storage

Avoid repeated freeze/thaw cycles. Store at 2-8°C for one month. Aliquot and store at -80°C for 12 months.

Storage buffer

Supplied as lyophilized form in PBS, pH7.4, containing 5% trehalose, 0.01% sarcosyl.

Reconstitution

Reconstitute in sterile PBS, pH7.2-pH7.4.

Isoelectric Point

7

GENE INFORMATION

Gene Name

[NPC2 NPC intracellular cholesterol transporter 2 \[Homo sapiens \(human\) \]](#)

Official Symbol

[NPC2](#)

Synonyms

NPC2; NPC intracellular cholesterol transporter 2; HE1; EDDM1; epididymal secretory protein E1; Niemann-Pick disease type C2 protein; epididymal protein 1; human epididymis-specific protein 1; tissue-specific secretory protein

Gene ID

[10577](#)

mRNA Refseq

[NM_006432.3](#)

Protein Refseq

[NP_006423.1](#)

UniProt ID

[P61916](#)

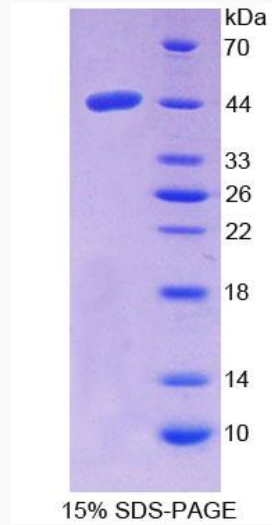
 Tel: 1-631-559-9269 1-516-512-3133

 Email: info@creative-biomart.com  Fax: 1-631-938-8127

 45-1 Ramsey Road, Shirley, NY 11967, USA



SDS-PAGE



Tel: 1-631-559-9269 1-516-512-3133

Email: info@creative-biomart.com Fax: 1-631-938-8127

45-1 Ramsey Road, Shirley, NY 11967, USA