

Recombinant Human NPDC1 Protein (Gly35-Asp181), C-His tagged

Cat. No. NPDC1-5025H **Lot. No.** (See product label)

SPECIFICATION

Product Overview	Recombinant human NPDC1 (Gly35-Asp181) fused with the C-terminal His tag was expressed in Mammalian cells.
Species	Human
Source	Mammalian Cells
ProteinLength	Gly35-Asp181
Form	Lyophilized powder/frozen liquid
Molecular Mass	16.17 kDa
Purity	>90% as determined by SDS-PAGE.
Notes	For research use only.
Storage	Use a manual defrost freezer and avoid repeated freeze thaw cycles. Store at 2 to 8 centigrade for one week. Store at -20 to -80 centigrade for twelve months from the date of receipt.
Storage Buffer	Supplied as solution form in PBS or lyophilized from PBS.
Reconstitution	Reconstitute in sterile water for a stock solution.

 Tel: 1-631-559-9269 1-516-512-3133

 Email: info@creative-biomart.com  Fax: 1-631-938-8127

 45-1 Ramsey Road, Shirley, NY 11967, USA

Shipping

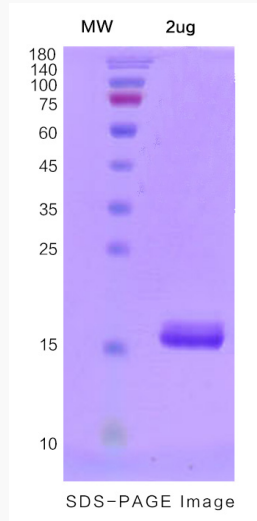
They are shipped out with dry ice/blue ice unless customers require otherwise.

GENE INFORMATION

Gene Name	NPDC1 neural proliferation, differentiation and control, 1 [Homo sapiens (human)]
Official Symbol	NPDC1
Synonyms	CAB; CAB-; CAB1; CAB-1; NPDC-1; NPDC1; neural proliferation, differentiation and control, 1
Gene ID	56654
mRNA Refseq	NM_015392
Protein Refseq	NP_056207
MIM	605798
UniProt ID	Q9NQX5

 Tel: 1-631-559-9269 1-516-512-3133 Email: info@creative-biomart.com  Fax: 1-631-938-8127 45-1 Ramsey Road, Shirley, NY 11967, USA

SDS-PAGE



 Tel: 1-631-559-9269 1-516-512-3133

 Email: info@creative-biomart.com  Fax: 1-631-938-8127

 45-1 Ramsey Road, Shirley, NY 11967, USA