

Active Recombinant Human NPEPPS protein, His-tagged

Cat. No. NPEPPS-1158H Lot. No. (See product label)

SPECIFICATION

Product Overview	Active Recombinant Human NPEPPS protein(P55786)(584-793 aa), fused with N-terminal His tag, was expressed in E.coli.
Species	Human
Source	E.coli
ProteinLength	584-793 aa
Form	20mM Tris, 150mM NaCl, pH8.0, containing 1mM EDTA, 1mM DTT, 0.01% SKL, 5% Trehalose and Proclin300.
Bio-activity	<p>Puromycin Sensitive Aminopeptidase (PSA) also known as cytosol alanyl aminopeptidase or alanine aminopeptidase (AAP) is used as a biomarker to detect damage to the kidneys, and that may be used to help diagnose certain kidney disorders. It is found at high levels in the urine when there are kidney problems. PSA has been proposed to function in a variety of processes, including metabolism of neuropeptidase, regulation of the cell cycle, and hydrolysis of proteasomal products to amino acids. Besides, Protein Disulfide Isomerase A3 (PDIA3) has been identified as an interactor of PSA, thus a binding ELISA assay was conducted to detect the interaction of recombinant human PSA and recombinant human PDIA3. Briefly, PSA were diluted serially in PBS, with 0.01% BSA (pH 7.4). Duplicate samples of 100uL were then transferred to PDIA3-coated microtiter wells and incubated for 2h at 37°C. Wells were washed with PBST and incubated for 1h with anti-PSA pAb, then</p>

 Tel: 1-631-559-9269 1-516-512-3133

 Email: info@creative-biomart.com  Fax: 1-631-938-8127

 45-1 Ramsey Road, Shirley, NY 11967, USA

aspirated and washed 3 times. After incubation with HRP labelled secondary antibody, wells were aspirated and washed 3 times. With the addition of substrate solution, wells were incubated 15-25 minutes at 37°C. Finally, add 50µ stop solution to the wells and read at 450nm immediately. The binding activity of PSA and PDIA3 was shown, and this effect was in a dose dependent manner.

Molecular Mass 24.7kDa

Endotoxin <1.0EU per 1µg (determined by the LAL method).

Purity > 90%

Storage Avoid repeated freeze/thaw cycles. Store at 2-8°C for one month. Store at -20°C for 12 months. Aliquot and store at -80°C for 12 months.

Reconstitution Reconstitute in 20mM Tris, 150mM NaCl (pH8.0) to a concentration of 0.1-1.0 mg/mL. Do not vortex.

GENE INFORMATION

Gene Name NPEPPS aminopeptidase puromycin sensitive [Homo sapiens]

Official Symbol NPEPPS

Synonyms NPEPPS; aminopeptidase puromycin sensitive; puromycin-sensitive aminopeptidase; metalloproteinase MP100; MP100; PSA; puromycin sensitive aminopeptidase; cytosol alanyl aminopeptidase; AAP-S;

Gene ID 9520

mRNA Refseq NM_006310

 Tel: 1-631-559-9269 1-516-512-3133

 Email: info@creative-biomart.com  Fax: 1-631-938-8127

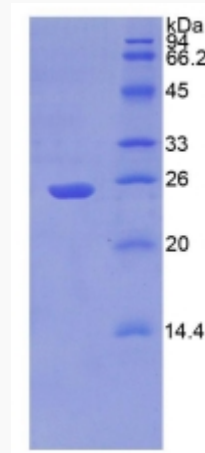
 45-1 Ramsey Road, Shirley, NY 11967, USA

Protein Refseq NP_006301

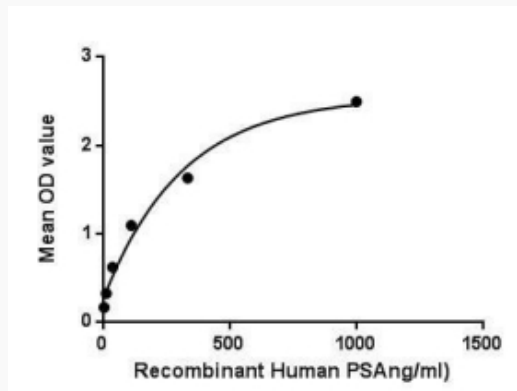
MIM 606793

UniProt ID P55786

SDS-PAGE



Activity



Tel: 1-631-559-9269 1-516-512-3133

Email: info@creative-biomart.com Fax: 1-631-938-8127

45-1 Ramsey Road, Shirley, NY 11967, USA