

# Recombinant Human NPEPPS Protein (Gly584-Gln793), His tagged

**Cat. No.** NPEPPS-3425H    **Lot. No.** (See product label)

## SPECIFICATION

<b>Product Overview</b>	Recombinant human PSA (Gly584-Gln793) protein fused with His tag was expressed in E. coli.
<b>Species</b>	Human
<b>Source</b>	E.coli
<b>ProteinLength</b>	Gly584-Gln793
<b>Description</b>	KLK3 (Kallikrein 3), also known as Prostate Specific Antigen (PSA), kallikrein-related peptidase 3, Gamma-seminoprotein, is a secreted protein of the glandular kallikrein subfamily of serine proteases. KLK3 contains one peptidase S1 domain. KLK3 is a glycoprotein produced almost exclusively by the prostate gland. Growing evidence suggests that many kallikreins are implicated in carcinogenesis and some have potential as novel cancer and other disease biomarkers.
<b>Molecular Mass</b>	24.38 kDa
<b>Purity</b>	>90 % as determined by SDS-PAGE.
<b>Notes</b>	For research use only.
<b>Storage</b>	Use a manual defrost freezer and avoid repeated freeze thaw cycles. Store at 2 to 8 centigrade for one week. Store at -20 to -80 centigrade for twelve months from the

 Tel: 1-631-559-9269    1-516-512-3133

 Email: [info@creative-biomart.com](mailto:info@creative-biomart.com)     Fax: 1-631-938-8127

 45-1 Ramsey Road, Shirley, NY 11967, USA

	date of receipt.
<b>Storage Buffer</b>	Supplied as solution form in PBS pH 7.5 or lyophilized from PBS pH 7.5.
<b>Reconstitution</b>	Reconstitute in sterile water for a stock solution.
<b>Shipping</b>	In general, proteins are provided as lyophilized powder/frozen liquid. They are shipped out with dry ice/blue ice unless customers require otherwise.

## GENE INFORMATION

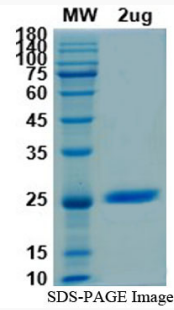
<b>Gene Name</b>	NPEPPS aminopeptidase puromycin sensitive [ Homo sapiens (human) ]
<b>Official Symbol</b>	NPEPPS
<b>Synonyms</b>	NPEPPS; aminopeptidase puromycin sensitive; puromycin-sensitive aminopeptidase; metalloproteinase MP100; MP100; PSA; puromycin sensitive aminopeptidase; cytosol alanyl aminopeptidase; AAP-S;
<b>Gene ID</b>	9520
<b>mRNA Refseq</b>	NM_006310
<b>Protein Refseq</b>	NP_006301
<b>MIM</b>	606793
<b>UniProt ID</b>	P55786

 Tel: 1-631-559-9269 1-516-512-3133

 Email: [info@creative-biomart.com](mailto:info@creative-biomart.com)  Fax: 1-631-938-8127

 45-1 Ramsey Road, Shirley, NY 11967, USA

**SDS-PAGE**



 Tel: 1-631-559-9269 1-516-512-3133

 Email: [info@creative-biomart.com](mailto:info@creative-biomart.com)  Fax: 1-631-938-8127

 45-1 Ramsey Road, Shirley, NY 11967, USA