

Recombinant Human NPEPPS Protein, GST-tagged

Cat. No. NPEPPS-6023H **Lot. No.** (See product label)

SPECIFICATION

Product Overview	Human NPEPPS partial ORF (NP_006301.2, 776 a.a. - 875 a.a.) recombinant protein with GST-tag at N-terminal.
Species	Human
Source	Wheat Germ
Description	This gene encodes the puromycin-sensitive aminopeptidase, a zinc metallopeptidase which hydrolyzes amino acids from the N-terminus of its substrate. The protein has been localized to both the cytoplasm and to cellular membranes. This enzyme degrades enkaphalins in the brain, and studies in mouse suggest that it is involved in proteolytic events regulating the cell cycle. [provided by RefSeq]
Molecular Mass	36.74 kDa
AA Sequence	SKHGRKAAWKFIKDNWEELYNRYQGGFLISRLIKLSVEGFAVDKIMAGEVKAFFESH APSAERTIQCCENILLNAAWLKRDAESIHQYLLQRKASPPTV
Applications	Enzyme-linked Immunoabsorbent Assay Western Blot (Recombinant protein) Antibody Production Protein Array
Notes	Best use within three months from the date of receipt of this protein.

 Tel: 1-631-559-9269 1-516-512-3133

 Email: info@creative-biomart.com  Fax: 1-631-938-8127

 45-1 Ramsey Road, Shirley, NY 11967, USA

Storage Store at -80 centigrade. Aliquot to avoid repeated freezing and thawing.

Storage Buffer 50 mM Tris-HCl, 10 mM reduced Glutathione, pH=8.0 in the elution buffer.

GENE INFORMATION

Gene Name NPEPPS aminopeptidase puromycin sensitive [Homo sapiens]

Official Symbol NPEPPS

Synonyms NPEPPS; aminopeptidase puromycin sensitive; puromycin-sensitive aminopeptidase; metalloproteinase MP100; MP100; PSA; puromycin sensitive aminopeptidase; cytosol alanyl aminopeptidase; AAP-S;

Gene ID 9520

mRNA Refseq NM_006310

Protein Refseq NP_006301

MIM 606793

UniProt ID P55786

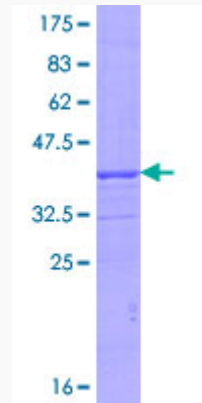
 Tel: 1-631-559-9269 1-516-512-3133

 Email: info@creative-biomart.com  Fax: 1-631-938-8127

 45-1 Ramsey Road, Shirley, NY 11967, USA

Quality Control

Testing:



12.5% SDS-PAGE Stained with Coomassie Blue.

 Tel: 1-631-559-9269 1-516-512-3133

 Email: info@creative-biomart.com  Fax: 1-631-938-8127

 45-1 Ramsey Road, Shirley, NY 11967, USA