

Recombinant Human NPHS1 protein(1131-1220 aa), C-His-tagged

Cat. No. NPHS1-2474H Lot. No. (See product label)

SPECIFICATION

Product Overview	Recombinant Human NPHS1 protein(O60500)(1131-1220 aa), fused with C-terminal His tag, was expressed in E. coli.
Species	Human
Source	E.coli
ProteinLength	1131-1220 aa
Form	0.15 M Phosphate buffered saline
Storage	Shipped on dry ice. Avoid repeated freeze-thaw cycles. Upon receipt, 2 days when stored at 2 to 8 °C after thawing. Up to 12 months when aliquoted and stored at -20 to -80°C.
Reconstitution	It is recommended that sterile water be added to the vial to prepare a stock solution of 0.2 ug/ul. Centrifuge the vial at 4°C before opening to recover the entire contents.
AA Sequence	STTEAEPYYRSLRDFSPQLPPTQEEVSYSRGFTGEDEDMAFPGHLYDEVERTYPPS GAWGPLYDEVQMGPWDLHWPEDTYQDPRGIYDQV

GENE INFORMATION

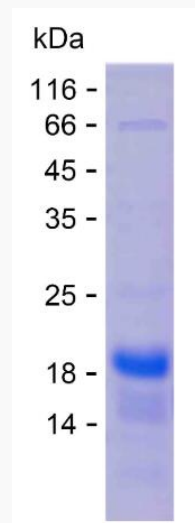
Gene Name	NPHS1 nephrosis 1, congenital, Finnish type (nephrin) [Homo sapiens]
------------------	--

 Tel: 1-631-559-9269 1-516-512-3133

 Email: info@creative-biomart.com  Fax: 1-631-938-8127

 45-1 Ramsey Road, Shirley, NY 11967, USA

Official Symbol	NPHS1
Synonyms	NPHS1; nephrosis 1, congenital, Finnish type (nephrin); nephrin; CNF; NPHN; renal glomerulus-specific cell adhesion receptor;
Gene ID	4868
mRNA Refseq	NM_004646
Protein Refseq	NP_004637
MIM	602716
UniProt ID	O60500

SDS-PAGE


 Tel: 1-631-559-9269 1-516-512-3133

 Email: info@creative-biomart.com  Fax: 1-631-938-8127

 45-1 Ramsey Road, Shirley, NY 11967, USA