

# Recombinant Human NPHS1 Protein (Pro89-Trp374), N-His tagged

**Cat. No.** NPHS1-4726H    **Lot. No.** (See product label)

## SPECIFICATION

<b>Product Overview</b>	Recombinant human NPHS1 (Pro89-Trp374) fused with the N-His tag was expressed in E. coli.
<b>Species</b>	Human
<b>Source</b>	E.coli
<b>ProteinLength</b>	Pro89-Trp374
<b>Form</b>	Lyophilized powder/frozen liquid
<b>Molecular Mass</b>	32.83 kDa
<b>Purity</b>	>90% as determined by SDS-PAGE.
<b>Notes</b>	For research use only.
<b>Storage</b>	Use a manual defrost freezer and avoid repeated freeze thaw cycles. Store at 2 to 8 centigrade for one week. Store at -20 to -80 centigrade for twelve months from the date of receipt.
<b>Storage Buffer</b>	0.01M PBS, pH 7.4, 0.02% NLS
<b>Reconstitution</b>	Reconstitute in sterile water for a stock solution.

 Tel: 1-631-559-9269    1-516-512-3133

 Email: [info@creative-biomart.com](mailto:info@creative-biomart.com)     Fax: 1-631-938-8127

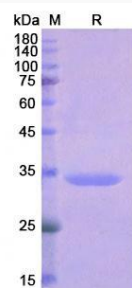
 45-1 Ramsey Road, Shirley, NY 11967, USA

**Shipping** They are shipped out with dry ice/blue ice unless customers require otherwise.

## GENE INFORMATION

<b>Gene Name</b>	NPHS1 nephrosis 1, congenital, Finnish type (nephrin) [ Homo sapiens (human) ]
<b>Official Symbol</b>	NPHS1
<b>Synonyms</b>	NPHS1; nephrosis 1, congenital, Finnish type (nephrin); nephrin; CNF; NPHN; renal glomerulus-specific cell adhesion receptor;
<b>Gene ID</b>	4868
<b>mRNA Refseq</b>	NM_004646
<b>Protein Refseq</b>	NP_004637
<b>MIM</b>	602716
<b>UniProt ID</b>	O60500

## SDS-PAGE



 Tel: 1-631-559-9269 1-516-512-3133

 Email: [info@creative-biomart.com](mailto:info@creative-biomart.com)  Fax: 1-631-938-8127

 45-1 Ramsey Road, Shirley, NY 11967, USA