

Recombinant Human NPHS1 protein, His & T7-tagged

Cat. No. NPHS1-5640H Lot. No. (See product label)

SPECIFICATION

Product Overview	Recombinant Human NPHS1 aa. (His705~Ser1055 (Accession # O60500)) fused with N-terminal His & T7 tag was produced in E. coli cells.
Species	Human
Source	E.coli
ProteinLength	His705~Ser1055
Description	This gene encodes a member of the immunoglobulin family of cell adhesion molecules that functions in the glomerular filtration barrier in the kidney. The gene is primarily expressed in renal tissues, and the protein is a type-1 transmembrane protein found at the slit diaphragm of glomerular podocytes. The slit diaphragm is thought to function as an ultrafilter to exclude albumin and other plasma macromolecules in the formation of urine. Mutations in this gene result in Finnish-type congenital nephrosis 1, characterized by severe proteinuria and loss of the slit diaphragm and foot processes.
Form	Freeze-dried powder
Molecular Mass	Predicted Molecular Mass: 41.7kDa
Endotoxin	<1.0EU per 1g (determined by the LAL method)
Purity	>90%

 Tel: 1-631-559-9269 1-516-512-3133

 Email: info@creative-biomart.com  Fax: 1-631-938-8127

 45-1 Ramsey Road, Shirley, NY 11967, USA

Characteristic	The isoelectric point is 5.7.
Applications	SDS-PAGE; WB; ELISA; IP.
Stability	The thermal stability is described by the loss rate. The loss rate was determined by accelerated thermal degradation test, that is, incubate the protein at 37°C for 48h, and no obvious degradation and precipitation were observed. The loss rate is less than 5% within the expiration date under appropriate storage condition.
Storage	Avoid repeated freeze/thaw cycles. Store at 2-8°C for one month. Aliquot and store at -80°C for 12 months.
Storage buffer	Supplied as lyophilized form in PBS, pH7.4, containing 5% trehalose, 0.01% sarcosyl.
Reconstitution	Reconstitute in sterile PBS, pH7.2-pH7.4.

GENE INFORMATION

Gene Name	NPHS1 NPHS1, nephrin [Homo sapiens (human)]
Official Symbol	NPHS1
Synonyms	NPHS1; NPHS1, nephrin; CNF; NPHN; nephrin; nephrosis 1, congenital, Finnish type (nephrin); renal glomerulus-specific cell adhesion receptor; truncated NPHS1
Gene ID	4868
mRNA Refseq	NM_004646.3
Protein Refseq	NP_004637.1

 Tel: 1-631-559-9269 1-516-512-3133

 Email: info@creative-biomart.com  Fax: 1-631-938-8127

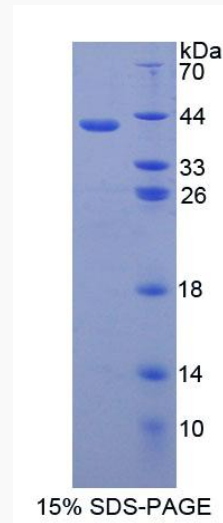
 45-1 Ramsey Road, Shirley, NY 11967, USA



UniProt ID

O60500

SDS-PAGE



Tel: 1-631-559-9269 1-516-512-3133

Email: info@creative-biomart.com Fax: 1-631-938-8127

45-1 Ramsey Road, Shirley, NY 11967, USA