

## Recombinant Human NPHS1 Protein, GST-tagged

Cat. No. NPHS1-6031H Lot. No. (See product label)

### SPECIFICATION

|                         |  |
|-------------------------|--|
| <b>Product Overview</b> | Human NPHS1 partial ORF ( NP_004637.1, 33 a.a. - 122 a.a.) recombinant protein with GST-tag at N-terminal.   |
| <b>Species</b>          | Human  |
| <b>Source</b>           | Wheat Germ   |
| <b>Description</b>      | Nephrin is a kidney glomerular filtration barrier protein that is an essential component of the interpodocyte-spanning slit diaphragm. Mutations in the nephrin gene are associated with congenital nephrotic syndrome (NPHS1; MIM 256300).[supplied by OMIM |
| <b>Molecular Mass</b>   | 35.64 kDa  |
| <b>AA Sequence</b>      | GFWALPENLTVVEGASVELRCGVSTPGSAVQWAKDGLLLGPDPRIPGFPRYRLEGD<br>PARGFHLHIEACDLSDDAEYECQVGRSEMGPEL  |
| <b>Applications</b>     | Enzyme-linked Immunoabsorbent Assay<br>Western Blot (Recombinant protein)<br>Antibody Production<br>Protein Array  |
| <b>Notes</b>            | Best use within three months from the date of receipt of this protein.   |
| <b>Storage</b>          | Store at -80 centigrade. Aliquot to avoid repeated freezing and thawing.   |

 Tel: 1-631-559-9269 1-516-512-3133

 Email: [info@creative-biomart.com](mailto:info@creative-biomart.com)  Fax: 1-631-938-8127

 45-1 Ramsey Road, Shirley, NY 11967, USA

**Storage Buffer** 50 mM Tris-HCl, 10 mM reduced Glutathione, pH=8.0 in the elution buffer.

## GENE INFORMATION

**Gene Name** NPHS1 nephrosis 1, congenital, Finnish type (nephrin) [ Homo sapiens ]

**Official Symbol** NPHS1

**Synonyms** NPHS1; nephrosis 1, congenital, Finnish type (nephrin); nephrin; CNF; NPHN; renal glomerulus-specific cell adhesion receptor;

**Gene ID** 4868

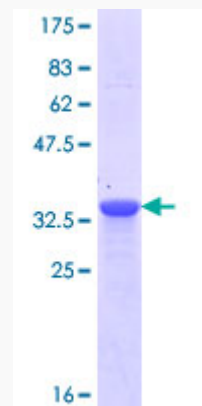
**mRNA Refseq** NM\_004646

**Protein Refseq** NP\_004637

**MIM** 602716

**UniProt ID** O60500

**Quality Control Testing:**



 Tel: 1-631-559-9269 1-516-512-3133

 Email: [info@creative-biomart.com](mailto:info@creative-biomart.com)  Fax: 1-631-938-8127

 45-1 Ramsey Road, Shirley, NY 11967, USA



12.5% SDS-PAGE Stained with Coomassie Blue.

 Tel: 1-631-559-9269 1-516-512-3133

 Email: [info@creative-biomart.com](mailto:info@creative-biomart.com)  Fax: 1-631-938-8127

 45-1 Ramsey Road, Shirley, NY 11967, USA