

## Recombinant Human NPHS1 Protein (23-257 aa), His-tagged

Cat. No. NPHS1-689H Lot. No. (See product label)

### SPECIFICATION

<b>Product Overview</b>	Recombinant Human NPHS1 Protein (23-257 aa) is produced by E. coli expression system. This protein is fused with a 6xHis tag at the N-terminal. Research Area: Cell Adhesion. Protein Description: Partial.
<b>Species</b>	Human
<b>Source</b>	E.coli
<b>ProteinLength</b>	23-257 aa
<b>Description</b>	Ses to play a role in the development or function of the kidney glomerular filtration barrier. Regulates glomerular vascular permeability. May anchor the podocyte slit diaphragm to the actin cytoskeleton. Plays a role in skeletal muscle formation through regulation of myoblast fusion.
<b>Form</b>	Tris-based buffer, 50% glycerol
<b>Molecular Mass</b>	29.1 kDa
<b>AA Sequence</b>	QLAIPASVPRGFWALPENLTVVEGASVELRCGVSTPGSAVQWAKDGLLLGPDPRIP GFPRYRLEGDPARGEFHLHIEACDLSDDAEYECQVGRSEMGPELVSPRVILSILVPP KLLLLTPEAGTMVTWVAGQEYVNCVSGDAKPAPDITILLSGQTISDISANVNEGSQQ KLFTVEATARVTPRSSDNRQLLVCEASSPALEAPIKASFTVNVLFPPGPPVIEWPGLD EGHVRA

 Tel: 1-631-559-9269 1-516-512-3133

 Email: [info@creative-biomart.com](mailto:info@creative-biomart.com)  Fax: 1-631-938-8127

 45-1 Ramsey Road, Shirley, NY 11967, USA

<b>Purity</b>	> 90% as determined by SDS-PAGE.
<b>Notes</b>	Repeated freezing and thawing is not recommended. Store working aliquots at 4 centigrade for up to one week.
<b>Storage</b>	The shelf life is related to many factors, storage state, buffer ingredients, storage temperature and the stability of the protein itself. Generally, the shelf life of liquid form is 6 months at -20 centigrade/-80 centigrade. The shelf life of lyophilized form is 12 months at -20 centigrade/-80 centigrade.
<b>Concentration</b>	A hardcopy of COA with concentration instruction is sent along with the products.

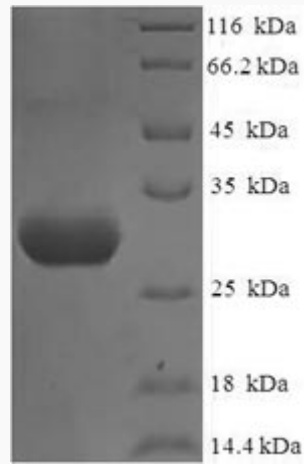
## GENE INFORMATION

<b>Gene Name</b>	NPHS1 nephrosis 1, congenital, Finnish type (nephrin) [ Homo sapiens ]
<b>Official Symbol</b>	NPHS1
<b>Synonyms</b>	NPHS1; nephrin; CNF; NPHN;
<b>Gene ID</b>	4868
<b>mRNA Refseq</b>	NM_004646
<b>Protein Refseq</b>	NP_004637
<b>MIM</b>	602716
<b>UniProt ID</b>	O60500

 Tel: 1-631-559-9269 1-516-512-3133

 Email: [info@creative-biomart.com](mailto:info@creative-biomart.com)  Fax: 1-631-938-8127

 45-1 Ramsey Road, Shirley, NY 11967, USA



(Tris-Glycine gel) Discontinuous SDS-PAGE (reduced) with 5% enrichment gel and 15% separation gel.

 Tel: 1-631-559-9269 1-516-512-3133

 Email: [info@creative-biomart.com](mailto:info@creative-biomart.com)  Fax: 1-631-938-8127

 45-1 Ramsey Road, Shirley, NY 11967, USA