

Recombinant Human NPM1 protein, His-tagged

Cat. No. NPM1-181H Lot. No. (See product label)

SPECIFICATION

Product Overview	Recombinant Human NPM1 protein(P06748-1) (Glu 2-Leu 294) was expressed in E.coli with a polyhistidine tag at the N-terminus.
Species	Human
Source	E.coli
ProteinLength	2-294 aa
Form	Supplied as sterile 30 mM Hepes, 2 mM EDTA, 0.001 % Tween, 15 % glycerol, pH 7.0.
Molecular Mass	The recombinant human NPM1 consists of 304 amino acids and has a calculated molecular mass of 34 kDa.
AASequence	MHHHHHHHHHHHEDSMDMDMSPLRPQNYLFGCELKADKDYHFKVDNDENEHQLSL RTVSLGAGAKDELHIVEAEAMNYEGSPIKVTLATLKMSVQPTVSLGGFEITPPVVLRL KCGSGPVHISGQHLVAVEEDAEESEDEEEEDVKLLSISGKRSAPGGGSKVPQKKVKL AADEDDDDDDDEEDDDDDDDDDDFDDEEAEEKAPVKKSIRDTPAKNAQKSNQNGKD SKPSSTPRSKGQESFKKQEKTPKTPKGPSSVEDIKAKMQASIEKGGSLPKVEAKFIN YVKNCFRMTDQEAIQDLWQWRKSL
Endotoxin	< 1.0 EU per µg of the protein as determined by the LAL method.
Purity	> 85 % as determined by SDS-PAGE

 Tel: 1-631-559-9269 1-516-512-3133

 Email: info@creative-biomart.com  Fax: 1-631-938-8127

 45-1 Ramsey Road, Shirley, NY 11967, USA

Storage Store it under sterile conditions at -20°C to -80°C upon receiving. Recommend to aliquot the protein into smaller quantities for optimal storage. Avoid repeated freeze-thaw cycles.

Concentration 0.2-1.0 mg/mL.

GENE INFORMATION

Gene Name NPM1 nucleophosmin (nucleolar phosphoprotein B23, numatrin) [Homo sapiens]

Official Symbol NPM1

Synonyms NPM1; nucleophosmin (nucleolar phosphoprotein B23, numatrin); nucleophosmin; B23; NPM; nucleolar phosphoprotein B23; nucleophosmin/nucleoplasmin family; member 1; numatrin; nucleolar protein NO38; nucleophosmin/nucleoplasmin family, member 1; MGC104254;

Gene ID 4869

mRNA Refseq NM_001037738

Protein Refseq NP_001032827

MIM 164040

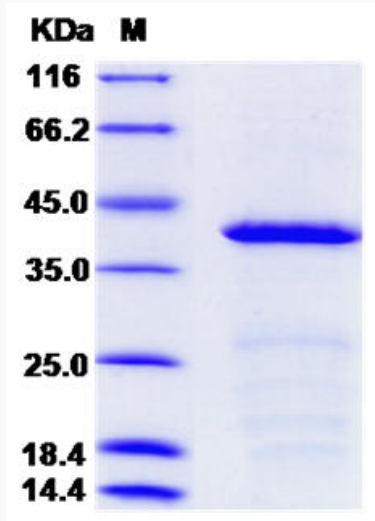
UniProt ID P06748

 Tel: 1-631-559-9269 1-516-512-3133

 Email: info@creative-biomart.com  Fax: 1-631-938-8127

 45-1 Ramsey Road, Shirley, NY 11967, USA

SDS-PAGE



 Tel: 1-631-559-9269 1-516-512-3133

 Email: info@creative-biomart.com  Fax: 1-631-938-8127

 45-1 Ramsey Road, Shirley, NY 11967, USA